



# CHOOSE YOUR RECYCLABLE MODIFORM PRODUCT

Modiform has investigated how plastic is recycled in various European countries. This infographic gives you insight into which pots and packs are recycled in several European countries.

## HOUSEHOLD WASTE AND INDUSTRIAL PROCESSING

Our pots and packs are made of recycled materials. The pots are recycled if consumers dispose of them with their household waste. For the packs, this now depends on the choice of material and the country in which it ends up. Our goal is for all packs to be recyclable everywhere. Our other products – such as growing and transport trays – are also recyclable but undergo industrial processing. Our aim at Modiform is to work together with you to close the material loop and bring about sustainable change in the sector. We are here to help you recycle your products.

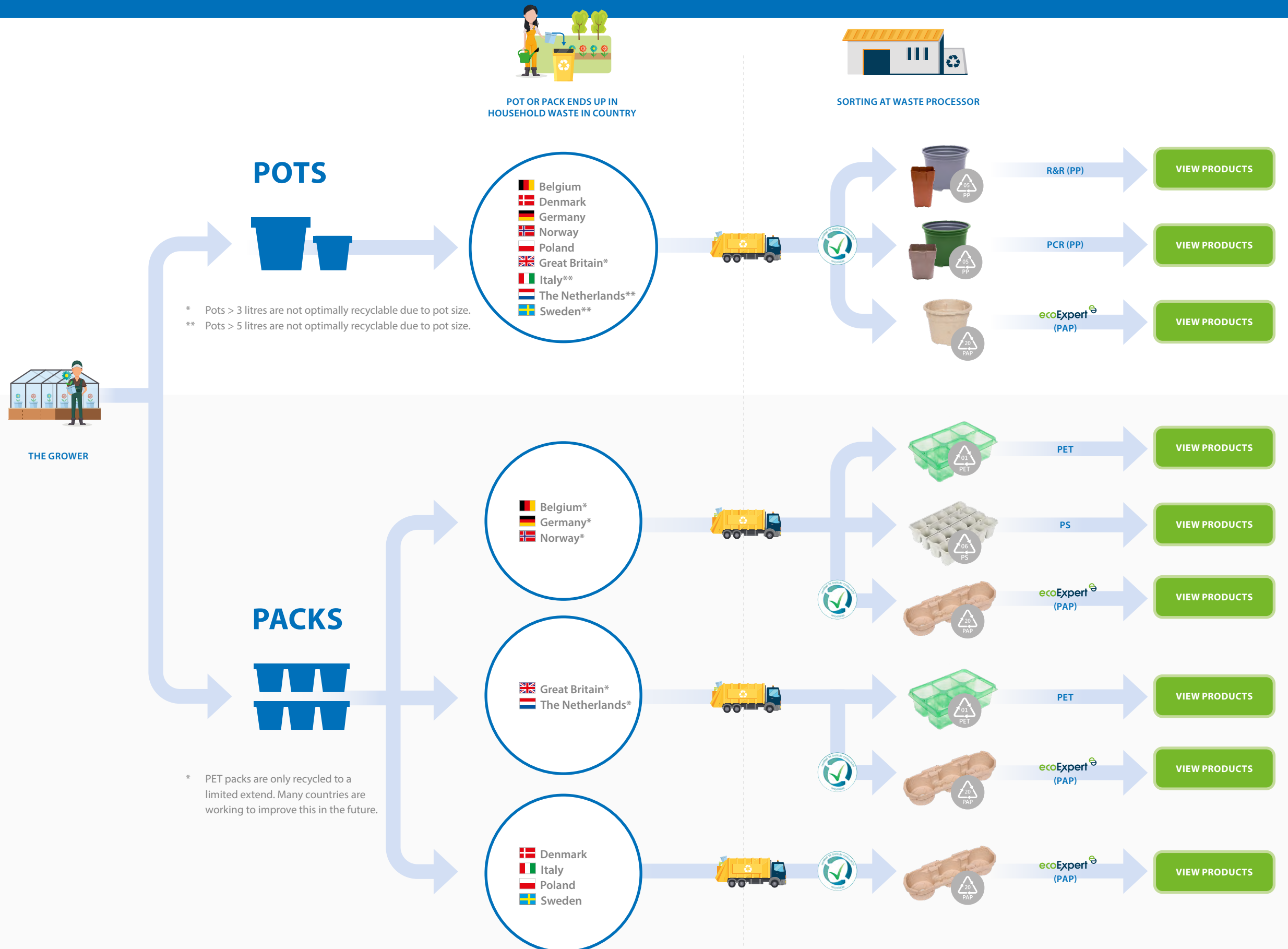
*Please contact us for the best solution for your company.*



Scan me

Want to know more?  
Scan the QR code and read more at [modiform.com/en/closed-loop-commitment](https://modiform.com/en/closed-loop-commitment)

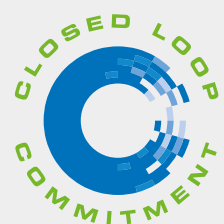
This information is based on a survey conducted in Q3 2021. It does not include developments after this timeframe.





## WHAT DOES IT MEAN?

HDPE	High-density polyethylene
LDPE	Low-density polyethylene
PE	Polyethylene
PET	Polyethylene terephthalate
PMD	Plastics, Metals, and Drinks cartons
PP	Polypropylene
PS	Polystyrene
rHDPE, rPET, rPP	Recyclate of HDPE, PET, or PP
R&R	Recycled and recyclable
PCR	Post-consumer Recycled



## DID YOU KNOW?

### EU LEGISLATION

A requirement of European legislation is that packaging must be reusable or recyclable.

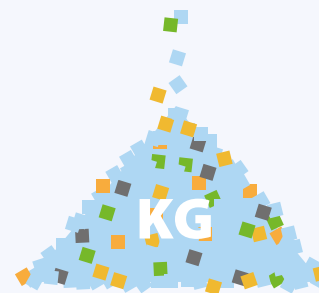
Modiform takes product recyclability into account during product design and product range management. For example, we design products that require less material so that raw materials are preserved. And we no longer supply PS packs to the UK.



### REGRANULATE

As of 2021, recycling will no longer be calculated as the amount of packaging waste collected but as the amount of regranulate that is produced from the packaging waste collected.

Did you know that Modiform collects PS and recycles it internally? 2.1 million kilos of PS were processed in 2020. This saves 5,703 tonnes of CO2 emissions in our film manufacturing when compared to the use of virgin materials. This figure is equal to the annual CO2 intake of 190,120 trees (source: EcoChain).



### NO CARBON BLACK

Plastic containing carbon black is not recycled from household waste in any country.

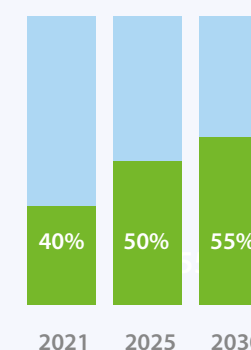
Modiform is therefore phasing out products containing carbon black on a gradual basis. We have also replaced the ink for printing with carbon black-free ink.



### OBJECTIVES

The bar chart shows the European objectives for the produced plastic packaging material that needs to be recycled. In addition, the Dutch government wants the economy to be circular in 2050.

There are a large number and variety of requirements and rules and regulations that apply to products in Europe. As a Modiform customer, your obligations in relation to plastic waste (commercial or business waste) differ per country. *Want to know more? Please contact [sales@modiform.com](mailto:sales@modiform.com)*



### PARTNERSHIP

Modiform enters into partnerships with leading players to make horticulture more sustainable.

Modiform is a dialogue partner for Greenport West-Holland; together they encourage the responsible use of plastics in horticulture in a circular economy.

As a member of the 'Club of 100' of the Greenhouse Horticulture and Flower Bulbs Business Unit of Wageningen University & Research (WUR), Modiform supports research into the consequences of a circular economy for businesses in greenhouse horticulture.

As a partner of MVO Nederland, we're part of the Frontrunners' Network of pioneers with future-oriented ambitions to work across sectors.



### CERTIFICATION

Cyclos-HTP issues recognised certificates for recycling in Europe as an independent institute.

Modiform uses this means of proof for the recyclability of its products.

