



Specialty Crops Market News Division U.S. Mexico Canada Agreement Seasonal Perishable Products Weekly Update

Agricultural Marketing Service

Volume I – Number 25

Issued Weekly

Friday, June 25, 2021

Update for Week of June 20-26, 2021

This report provides trend analysis of the volume and prices of Seasonal Perishable commodities. Volume represents current week and prices represent open (spot) market sales by first handlers on product of generally good quality and condition unless otherwise stated and may include promotional allowances or other incentives. The charts provide graphic representation of the volume and prices of the major commodities this week based on seasonal volume.

Tropical Storm Claudette, although it did not make landfall as a hurricane, managed to bring the first taste of the 2021 Atlantic hurricane season with rainfall stretching up most of the East coast. The states of Louisiana, Mississippi, Alabama, Georgia, and Florida all experienced tropical storm-force winds, tornadoes, or flash flooding, including the tragic loss of 14 lives in Alabama. South Carolina, North Carolina, and Virginia experienced rainfall in the days afterwards as the remnants of the storm made its way up the coastline. For some already saturated fields in Mississippi and Louisiana, this additional moisture may put an end to growers' plans for the season. Other growers in Florida and Georgia had to curtail harvests of tomatoes, watermelon, cucumbers, bell peppers and other commodities until fields are dry enough to access. The produce industry has been on the edge financially and facing challenges from lack of supplies and high freight rates that have impacted profitability, so any additional losses due to weather will be hard. A tight labor situation persists nationwide, with the impacts seen widely in the retail and service sectors, as well as in farm labor.

Peruvian asparagus movement is expected to increase due to upcoming holiday retail promotional ads, with shipments expected to peak over the next few days, although the latest reports from shippers say the current vessel is delayed once again. Prices are higher on the spot market. Demand for large and standard sizes is moderate but others are in short supply due to limited domestic supplies. Asparagus crossings from Mexico are expected to increase by next week with current supplies light. Prices represent very few spot market sales as most product is covering contract sales. Some rain in the forecast for the growing region should help plant growth. Movement from Michigan is expected to decrease seasonally. The remaining supplies are in too few hands to establish a market. Reporting of asparagus from the Walla Walla District and Lower Yakima Valley Washington has ended for the season and the last F.O.B. price reports have been issued.

Movement of avocados from Mexico crossing through Texas is expected to remain about the same, with trading on large sizes slow, 84s very active, and others fairly slow. Prices were mixed to generally unchanged with light demand for large sizes and good demand on smaller fruit. Peru imports arriving through the ports of Miami, Philadelphia, and New York movement is expected to increase seasonally, with trading moderate. The first F.O.B. price reports of the season have been issued. Movement from the South District California is expected to decrease slightly. Trading and demand both moderate with prices lower to generally unchanged.

Cucumber crossings from Mexico through Texas are expected about the same, with trading early moderate and later fairly active at higher prices. Demand remained strong this week with most available cucumbers reserved for contracts or previous commitments. Movement from Mexico crossing through Nogales, Arizona is expected to experience a sharp

For more information on:

- [Shipping Point Report Details](#)
- [Movement Report Details](#)
- [Generating Custom Reports](#)

For assistance please contact: jeff.main@usda.gov

[Custom Average Tool \(CAT\) Graphing tool and aggregated data source.](#)

seasonal decrease as quality is diminishing due to hot weather in the growing areas. Trading was moderate, with prices 36s generally unchanged and others slightly lower. The final F.O.B. price report of the season will be issued this week. South Georgia movement is expected to remain about the same with trading moderate and prices medium higher, others unchanged. Flooding and wet fields are curtailing harvests and causing problems with condition and quality as well as putting crops at risk from insects and mold since growers are unable to spray due to the weather. Movement from Mexico crossing through Otay Mesa is expected about the same. Trading was fairly active with prices 36s slightly higher and others generally unchanged. Demand is fairly active, and quality is reported as generally good. The first F.O.B. price reports out of Eastern North Carolina have been issued for the season. Movement is expected to decrease slightly as some shippers expect to wrap up harvest by the end of the current trade week. Trading was moderate with prices medium higher and others slightly lower.

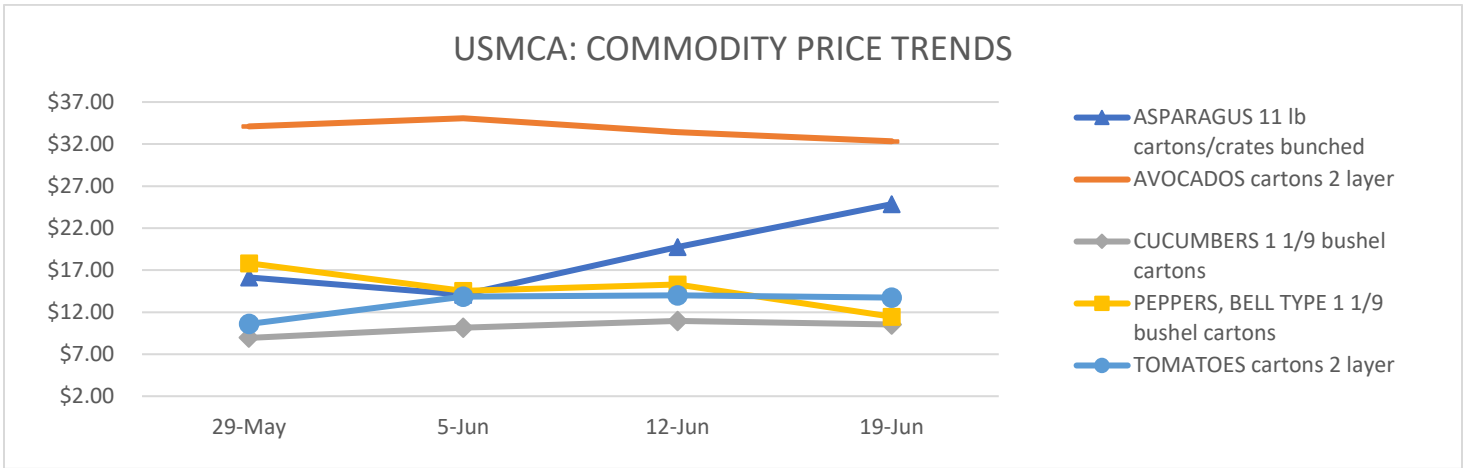
Movement of green bell peppers from Mexico crossing through Texas is expected about the same. Supplies continue to be light and in too few hands to quote, but demand is fairly good at lower price points. South Georgia bell pepper movement is expected to increase, with trading slow at lower prices and many sales pre-committed at lower prices. Wet fields are limiting grower access for harvest. Movement of green bell peppers from the Coachella Valley, California has finished for the season. Movement out of the San Joaquin Valley, California is expected to increase seasonally. Trading was fairly slow and prices much lower on generally good quality product. Light harvest is currently underway out of Eastern North Carolina. Currently, no F.O.B. price report is being issued.

Tomato movement from Mexico crossing through Texas is expected about the same with early trading active and moderate later. Prices were much lower despite fairly good demand. Supplies remain fairly light. Most present shipments are from prior bookings or previous commitments. Florida West and South Carolina District movement is expected to remain about the same despite the curtailing of some harvests over the weekend and into the week due to rain and wet fields. No other damage was reported from Tropical Storm Claudette, although late pickups and deliveries remain an ongoing problem due to truck shortages. Trading was very active with moderate to very good demand and prices generally unchanged. Central District California movement is expected to increase seasonally. Supplies are currently in few hands and trading remains fairly slow. Demand is moderate and volume continues to increase although harvests have been curtailed by labor shortages in some cases. Truck shortages and high freight rates are also negatively affecting the market. Movement of tomatoes from Mexico crossing through Nogales, Arizona is expected to decrease seasonally. Trading was active early and moderate later at lower to much lower prices. Movement of tomatoes from Mexico crossing through Otay Mesa is expected to continue to increase seasonally. Trading was moderate early and fairly slow later at much lower prices. Supplies of larger sizes are heavy and light on smaller sizes. The first F.O.B. price report has been issued for tomatoes out of Southeastern Arkansas, with movement expected to increase seasonally. Trading was very active, with demand very good demand to moderate and prices generally unchanged to slightly lower. Prices are being negatively affected by high truck rates.

The following table provides a four-week price trend of the highest traded commodities this week.

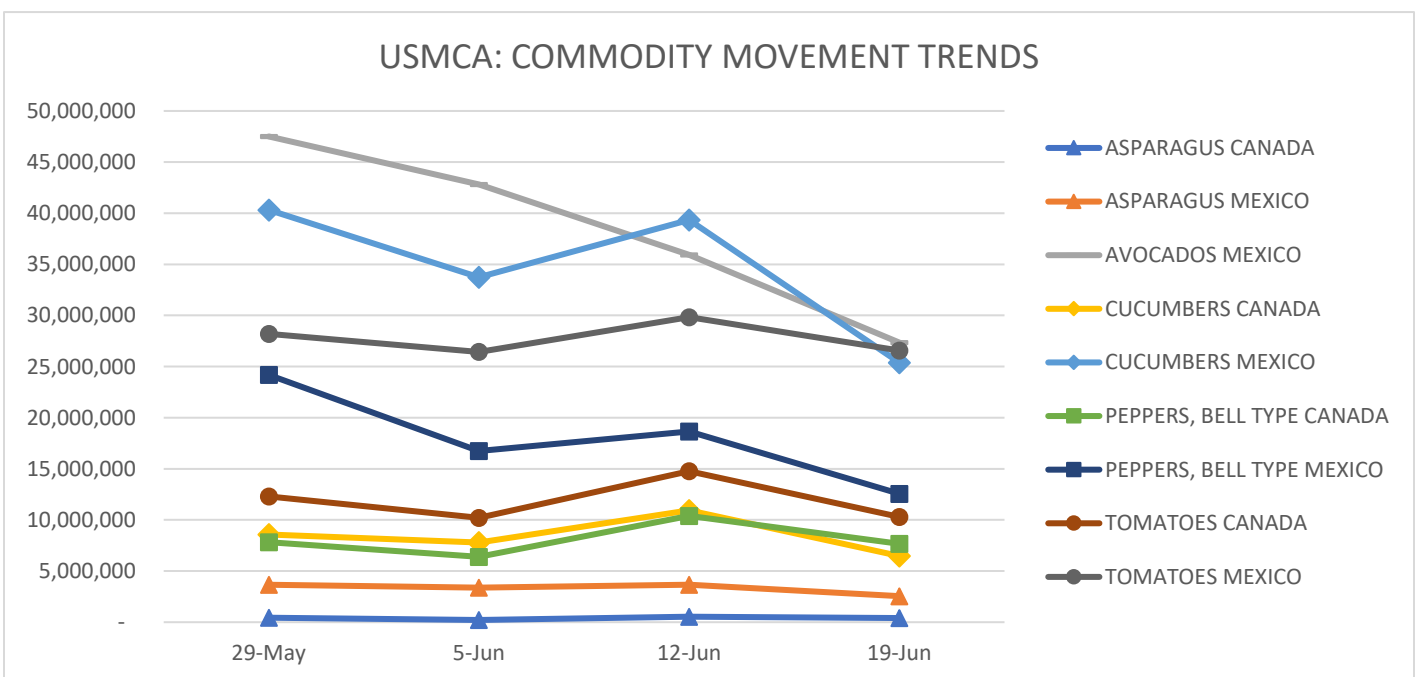
Four Week Price Trend in U.S. Dollars

Commodity	Package	29-May	5-Jun	12-Jun	19-Jun
ASPARAGUS	11 lb. cartons/crates bunched	\$ 16.13	\$ 14.08	\$ 19.75	\$ 24.85
AVOCADOS	cartons 2 layer	\$ 34.11	\$ 35.07	\$ 33.41	\$ 32.33
CUCUMBERS	1 1/9-bushel cartons	\$ 8.94	\$ 10.16	\$ 10.96	\$ 10.53
PEPPERS, BELL TYPE	1 1/9-bushel cartons	\$ 17.82	\$ 14.55	\$ 15.31	\$ 11.46
TOMATOES	cartons 2 layer	\$ 10.60	\$ 13.85	\$ 14.00	\$ 13.72

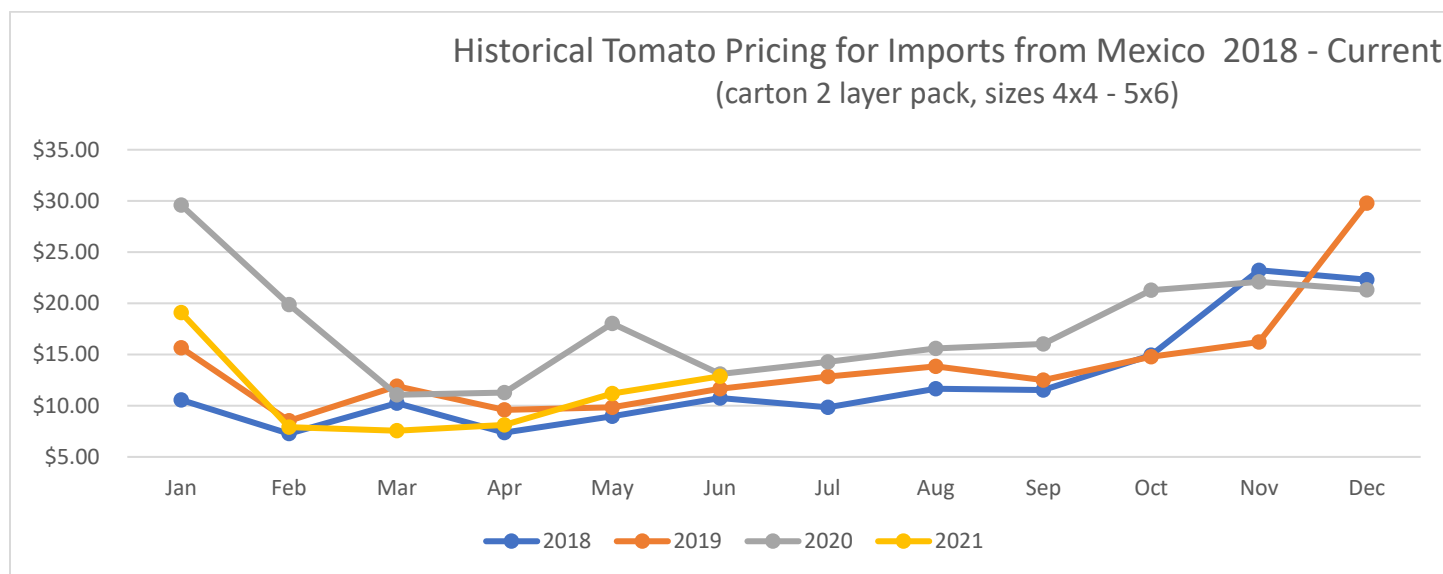


Four Week Movement in Pounds

COMMODITY	ORIGIN	29-May	5-Jun	12-Jun	19-Jun
ASPARAGUS	CANADA	444,469	216,645	537,658	405,611
	MEXICO	3,649,979	3,366,667	3,666,487	2,548,406
AVOCADOS	MEXICO	47,507,507	42,824,393	35,942,068	27,346,932
CUCUMBERS	CANADA	8,560,115	7,779,743	10,938,018	6,474,345
	MEXICO	40,321,707	33,752,876	39,326,785	25,388,336
PEPPERS, BELL TYPE	CANADA	7,831,186	6,394,111	10,399,788	7,657,730
	MEXICO	24,183,754	16,734,618	18,644,801	12,561,870
TOMATOES	CANADA	12,303,779	10,211,733	14,766,760	10,285,143
	MEXICO	28,199,577	26,430,690	29,834,924	26,560,006



The following chart, *Historical Tomato Pricing for Imports from Mexico*, is a four-year view of Mexican tomato prices at shipping point. Tomatoes are shown as they are the most consistently traded year-round. They have the highest volume of product moving between the U.S., Mexico, and Canada, along with a high level of market coverage of tomatoes by USDA Market News.



To be regarded as "seasonal and perishable," agricultural products must meet the following conditions: (1) the products are fresh or chilled products falling under the following HS2002 tariff codes: 0701, 0702, 0703, 0704, 0705, 0706, 0707, 0708, 0709, 0803, 0804, 0805, 0806, 0807, 0808, 0809, 0810; (2) the products are marketed in raw form for consumption without "further processing" ("further processing" refers to e.g. crushing, juicing, canning, or any other process that transforms the product from its raw form); and (3) the products normally are marketed within eight weeks after harvesting.

For information on the imported volume and prices of the remaining Seasonal and Perishable commodities listed below please visit: <https://www.marketnews.usda.gov/mnp/fv-home>

- Potatoes
- Tomatoes
- Onions, shallots, garlic, leeks, and other alliaceous vegetables
- Cabbages, cauliflower, kohlrabi, kale, and similar edible brassicas
- Lettuce (*Lactuca sativa*) and chicory (*Cichorium* spp.)
- Carrots, turnips, salad beets (salad beetroot), salsify, celeriac, radishes, and similar edible roots
- Cucumbers, including gherkins
- Leguminous vegetables, shelled or unshelled
- Other vegetables, fresh or chilled: asparagus, eggplants, celery, mushrooms and truffles, peppers (*Capsicum* or of the genus *Pimenta*), spinach, artichokes, olives, pumpkins, squash, and gourds
- Bananas and plantains
- Dates, figs, pineapples, avocados, guavas, mangoes, and mangosteens
- Citrus fruit
- Grapes
- Melons (including watermelons) and papayas (papaws)
- Apples, pears, and quinces
- Apricots, cherries, peaches (including nectarines), plums (including prune plums) and sloes
- Other fruit: strawberries, raspberries, blackberries, mulberries, loganberries, black, white, or red currants and gooseberries (other than kiwifruit), cranberries, blueberries, and other fruits of the genus *Vaccinium*, kiwifruit, durians, persimmons,
- Other berries; tamarinds