



Specialty Crops Market News Division U.S. Mexico Canada Agreement Seasonal Perishable Products Weekly Update

Agricultural Marketing Service

Volume I – Number 27

Issued Weekly

Friday, July 2, 2021

Update for Week of June 27-July 3, 2021

This report provides trend analysis of the volume and prices of Seasonal Perishable commodities. Volume represents current week and prices represent open (spot) market sales by first handlers on product of generally good quality and condition unless otherwise stated and may include promotional allowances or other incentives. The charts provide graphic representation of the volume and prices of the major commodities this week based on seasonal volume.

The ongoing shortage of qualified truck drivers continues to affect all aspects of life, often in ways consumers would never have anticipated. With the upcoming 4th of July holiday weekend, automobile travel is projected to be at levels not seen since before the start of the pandemic. Already, gas stations in some states are struggling to schedule adequate fuel deliveries, which must be carried out by specially qualified drivers. Temporary delivery issues and associated pump outages have been reported in the week ahead of the holiday in parts of Colorado, the Florida Keys, central Iowa, south central Ohio, Washington, and Oregon so far. Many fuel delivery drivers have left the business during the past year, either for retirement or for other lines of work during the pandemic, and many of the nation's CDL schools closed over the past year as well. The trucking industry, much like the other levels of food service and production, is in the midst of a severe labor shortage being helped only slightly by generous sign-on bonuses and increasing employee benefits.

Peru asparagus movement is expected to remain about the same even as freight prices continue to increase, with both air freight and truck rates showing marked increases week over week. Shipments for 4th of July holiday promotions have largely finished and ports in South Florida are expected to be closed on Monday the 5th. Prices were steady to slightly higher on the spot market, with trading active on very light supplies of large sizes and moderate on others. Asparagus crossings from Mexico are expected to remain about the same, with supplies light and demand good. Prices represent very few spot market sales as most product is covering contract sales. Movement of asparagus from Michigan is expected to decrease seasonally. The remaining supplies are in too few hands to establish a market.

Movement of avocados from Mexico crossing through Texas is expected to decrease slightly after recent storms temporarily disrupted the harvest. Supplies of 84 remain very light with very good demand, with moderate demand on other sizes, and higher prices on conventional for all sizes except 60s. Peru imports arriving through the ports of Miami, Philadelphia, and New York movement is expected to remain about the same, with trading moderate. Prices on 40s-48s and 84s were slightly lower with others generally unchanged. Movement from the South District California is expected to decrease slightly. Trading and demand both moderate with prices generally unchanged.

Mexican cucumber crossings through Texas are expected about the same, with trading early fairly active and later active at much higher prices. Demand remained good this week with most available cucumbers reserved for contracts or previous commitments and most available cucumbers either super select or large sized. Movement of Mexico crossings through the Otay Mesa is expected to increase seasonally. Trading was fairly active early and active late with prices higher to much higher. Demand is fairly good although movement and prices are being impacted by truck shortages and high freight rates. Movement of Mexico crossings through Nogales, Arizona is expected to decrease sharply as

most
For more information on:

- [Shipping Point Report Details](#)
- [Movement Report Details](#)
- [Generating Custom Reports](#)

For assistance please contact: jeff.main@usda.gov

[Custom Average Tool \(CAT\) Graphing tool and aggregated data source.](#)

shippers are finished for the season. Supplies are insufficient and in too few hands to establish a market and the final F.O.B. price report of the season has been issued, with lighter crossings expected to continue through July 3. South Georgia movement is expected to remain about the same with trading moderate and prices higher. Movement out of Eastern North Carolina is expected to continue to decrease slightly as some shippers are finished for the season. Trading was moderate at higher prices. Light movement is currently underway out of Western North Carolina with more expected over the next 7-10 days. No F.O.B. price report is currently being issued.

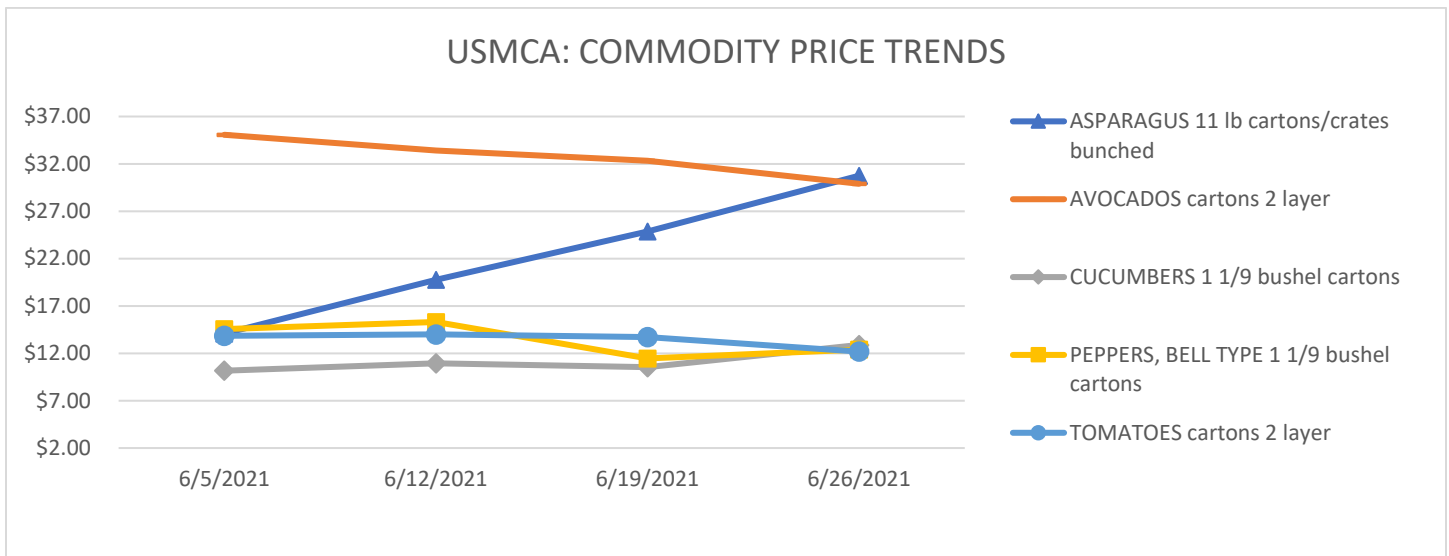
Movement of green bell peppers from Mexico crossing through Texas is expected about the same. Supplies continue to be light and in too few hands to quote, but demand continues strong at higher price points. Movement out of the San Joaquin Valley, California is expected to increase seasonally. Early trading was fairly slow increasing to moderate later and prices were slightly lower on irregular sized, slightly higher on others for generally good quality product. South Georgia bell pepper movement is expected to decrease slightly, with trading moderate and prices generally unchanged to higher. Movement of green bell peppers out of Eastern North Carolina is expected to increase seasonally. Trading was moderate and the first F.O.B. price report has been issued.

Tomato movement of Mexico crossings through Texas is expected about the same with early trading moderate and fairly active later. Prices were slightly higher to higher with fairly good demand for all sizes and packs. Supplies remain fairly light. Most present shipments are from prior bookings or previous commitments. Florida West and South Carolina District movement is expected to remain about the same despite continuing truck delays of up to 2 days behind schedule. Trading was active to very active with very good demand and prices generally unchanged. Some growers have finished harvesting and have put the tomatoes into gas rooms for color and to await trucks for shipment. Central District California movement is expected to increase seasonally. Trading early was fairly slow and moderate later, with prices mixed. Truck shortages and high freight rates continue to negatively affect the market. Movement of tomatoes from Mexico crossings through Otay Mesa is expected to increase seasonally. Trading was fairly slow early and active later at much higher prices. Supplies are light and demand is expected to continue to increase as more locations fully re-open. Most present shipments are from prior bookings or previous commitments. Movement of tomatoes from Mexico crossings through Nogales, Arizona is expected to decrease sharply as most shippers are finished for the season. Supplies are insufficient and in too few hands to establish a market and the last F.O.B. price report for the season has been issued, with lighter crossings expected to continue through July 3. Movement of tomatoes out of Southeastern Arkansas is expected to slightly increase. Trading and demand were moderate with prices mixed throughout the week. Prices are being negatively affected by high truck rates. Light harvest of tomatoes is expected to begin within the next 10 days out of Alabama, Eastern Tennessee, and Virginia Eastern Shore.

The following table provides a four-week price trend of the highest traded commodities this week.

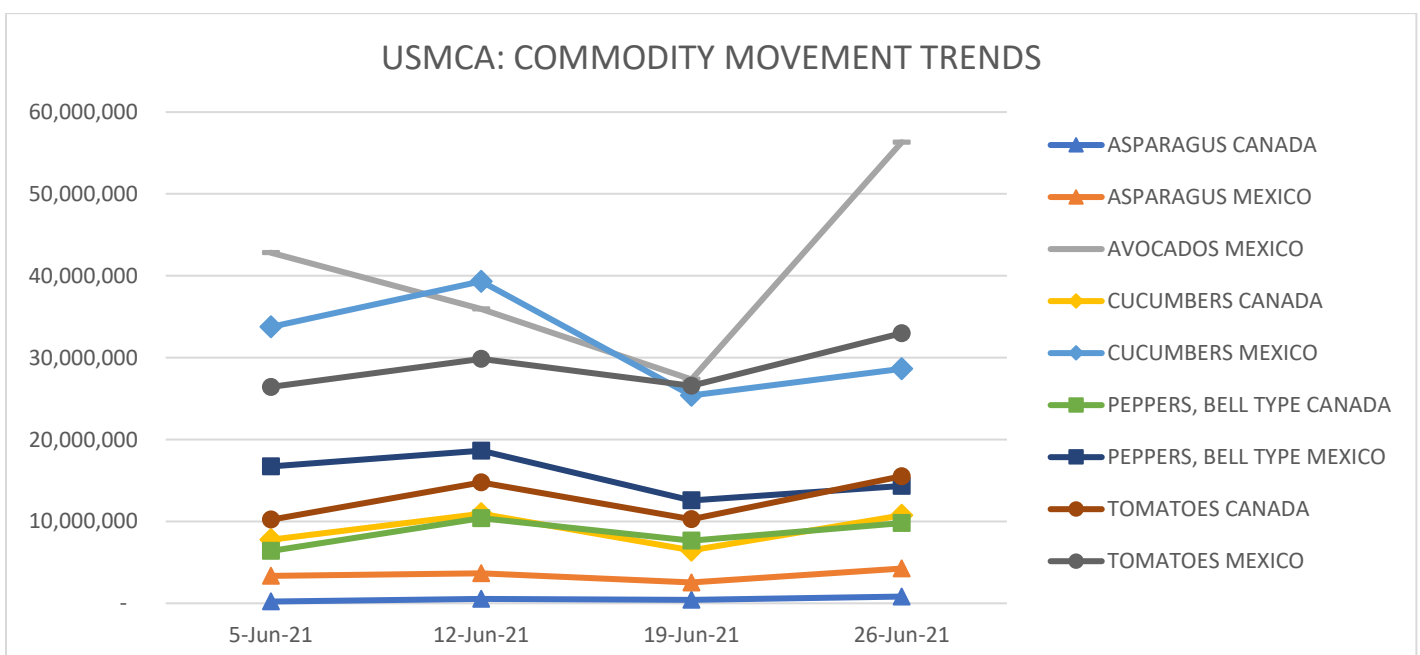
Four Week Price Trend in U.S. Dollars

Commodity	Package	6/5/2021	6/12/2021	6/19/2021	6/26/2021
ASPARAGUS	11 lb. cartons/crates bunched	\$ 14.08	\$ 19.75	\$ 24.85	\$ 30.75
AVOCADOS	cartons 2 layer	\$ 35.07	\$ 33.41	\$ 32.33	\$ 29.90
CUCUMBERS	1 1/9-bushel cartons	\$ 10.16	\$ 10.96	\$ 10.53	\$ 12.89
PEPPERS, BELL TYPE	1 1/9-bushel cartons	\$ 14.55	\$ 15.31	\$ 11.46	\$ 12.38
TOMATOES	cartons 2 layer	\$ 13.85	\$ 14.00	\$ 13.72	\$ 12.18

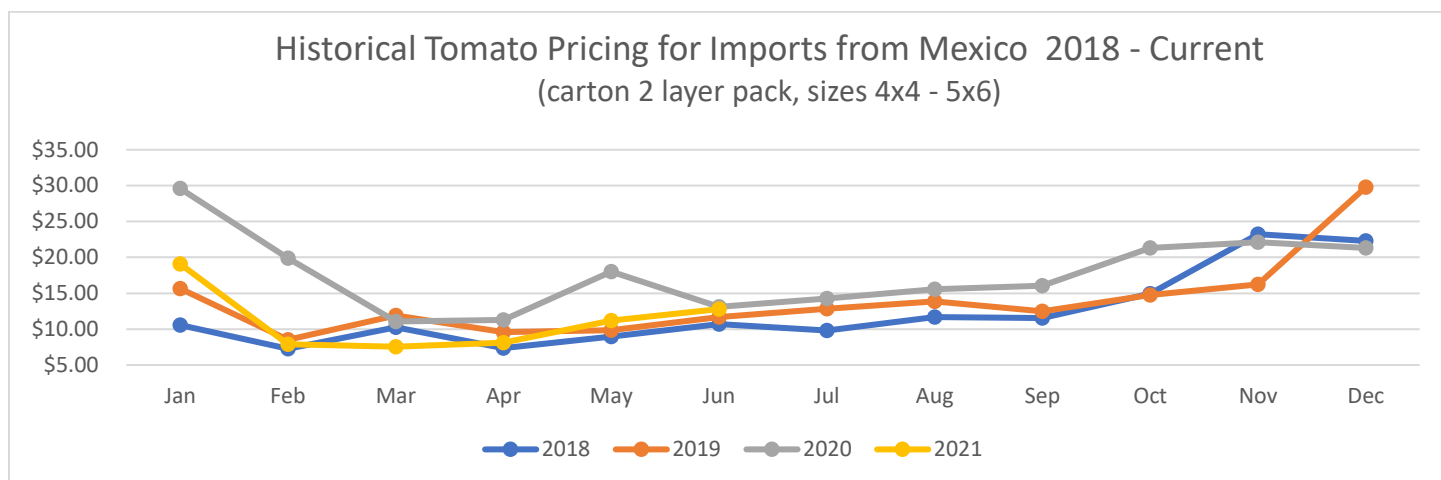


Four Week Movement in Pounds

COMMODITY	ORIGIN	5-Jun-21	12-Jun-21	19-Jun-21	26-Jun-21
ASPARAGUS	CANADA	216,645	537,658	405,611	824,007
	MEXICO	3,366,667	3,666,487	2,548,406	4,247,576
AVOCADOS	MEXICO	42,824,393	35,942,068	27,346,932	56,322,205
CUCUMBERS	CANADA	7,779,743	10,938,018	6,474,345	10,726,031
	MEXICO	33,752,876	39,326,785	25,388,336	28,657,360
PEPPERS, BELL TYPE	CANADA	6,394,111	10,399,788	7,657,730	9,804,407
	MEXICO	16,734,618	18,644,801	12,561,870	14,345,433
TOMATOES	CANADA	10,211,733	14,766,760	10,285,143	15,521,791
	MEXICO	26,430,690	29,834,924	26,560,006	32,993,125



The following chart, *Historical Tomato Pricing for Imports from Mexico*, is a four-year view of Mexican tomato prices at shipping point. Tomatoes are shown as they are the most consistently traded year-round. They have the highest volume of product moving between the U.S., Mexico, and Canada, along with a high level of market coverage of tomatoes by USDA Market News.



To be regarded as "seasonal and perishable," agricultural products must meet the following conditions: (1) the products are fresh or chilled products falling under the following HS2002 tariff codes: 0701, 0702, 0703, 0704, 0705, 0706, 0707, 0708, 0709, 0803, 0804, 0805, 0806, 0807, 0808, 0809, 0810; (2) the products are marketed in raw form for consumption without "further processing" ("further processing" refers to e.g. crushing, juicing, canning, or any other process that transforms the product from its raw form); and (3) the products normally are marketed within eight weeks after harvesting.

For information on the imported volume and prices of the remaining Seasonal and Perishable commodities listed below please visit: <https://www.marketnews.usda.gov/mnp/fv-home>

- Potatoes
- Tomatoes
- Onions, shallots, garlic, leeks, and other alliaceous vegetables
- Cabbages, cauliflower, kohlrabi, kale, and similar edible brassicas
- Lettuce (*Lactuca sativa*) and chicory (*Cichorium* spp.)
- Carrots, turnips, salad beets (salad beetroot), salsify, celeriac, radishes, and similar edible roots
- Cucumbers, including gherkins
- Leguminous vegetables, shelled or unshelled
- Other vegetables, fresh or chilled: asparagus, eggplants, celery, mushrooms and truffles, peppers (*Capsicum* or of the genus *Pimenta*), spinach, artichokes, olives, pumpkins, squash, and gourds
- Bananas and plantains
- Dates, figs, pineapples, avocados, guavas, mangoes, and mangosteens
- Citrus fruit
- Grapes
- Melons (including watermelons) and papayas (papaws)
- Apples, pears, and quinces
- Apricots, cherries, peaches (including nectarines), plums (including prune plums) and sloes
- Other fruit: strawberries, raspberries, blackberries, mulberries, loganberries, black, white, or red currants and gooseberries (other than kiwifruit), cranberries, blueberries, and other fruits of the genus *Vaccinium*, kiwifruit, durians, persimmons,
- Other berries; tamarinds