



Specialty Crops Market News Division U.S. Mexico Canada Agreement Seasonal Perishable Products Weekly Update

Agricultural Marketing Service

Issued Weekly

Friday, July 8, 2022

Update for Week of July 3 - 9, 2022

This report provides trend analysis of the volume and prices of Seasonal Perishable commodities. Volume represents current week and prices represent open (spot) market sales by first handlers on product of generally good quality and condition unless otherwise stated and may include promotional allowances or other incentives. The charts provide graphic representation of the volume and prices of the major commodities this week based on seasonal volume.

After months of increasing inflation being reported for markets worldwide, many governments have taken steps to curb price acceleration by increasing interest rates. In the complex system of global finance, this may now prove to be a contributing factor to recession which some experts are now warning is imminent. Several key commodities, including copper, wheat, and crude oil, are showing lower prices after months of near-record increases. Part of this decrease could also be attributed to slowing markets and lack of demand, along with the gradual easing of supply chain disruptions.

Movement of Mexican asparagus crossing through Arizona, California and Texas are expected to increase. Trading jumbo size moderate, others moving fairly slow. Currently demand is light with very limited orders. Prices are trending downward due to the holiday weekend. It seems that there is competition for shelf space in the marketplace as there are ample supplies of summer fruits and vegetables available. Another contributing factor for slow demand is that consumers are also shopping locally grown produce. Peru imports of asparagus through South Florida ports of entry expected to remain about the same. Trading jumbo and extra-large moderate, others fairly slow. Prices small generally unchanged, others lower. Supplies of white small fairly heavy, others light to very light. European demand on three larger sizes remains good. Quality is being reported as generally good. Movement of asparagus from Michigan expected to decrease seasonally. Remaining supplies are insufficient and in too few hands to establish a market.

Avocado crossings from Mexico through Texas for the 2021 crop season has come to an end. Movement is expected to increase as the 2022 crop season gets underway with growers increasing harvest production. This trend will continue, and more crossings of product will make its way across the Mexican border. Trading ended up being slow and prices were lower. A last report was issued this week on the 2021 crop season. Peruvian imports of avocados are increasing weekly and are expected to continue to increase seasonally, but supplies remain light. Trading is moderate and prices were lower early in the week, but now remain about steady. Movement of avocados from the Southern California District expected to decrease as more supplies increase from Mexico. Trading remains fairly slow as of today, with prices lower. Prices are expected to go down even lower with the increased supplies from Mexico.

Mexico crossings of cucumbers through Texas movement expected about the same. Trading remains active with prices slightly higher this week. Most present shipments from prior bookings and/or previous commitments. Quality expected to be variable. Movement of cucumbers from Mexico crossing through Otay Mesa, California is expected to increase seasonally. Trading early very active, but lately active with prices slightly higher. Quality generally good. Cucumber movement out of South Georgia expected to continue to decrease as most shippers are finishing up for the season. Even though some growers are going back to the fields that were considered finished to spot harvest them, most of them are done for the season and planning for the fall. Trading is moderate and prices are higher. Quality is being reported as

For more information on:

- [Shipping Point Report Details](#)
- [Movement Report Details](#)
- [Generating Custom Reports](#)

For assistance please contact: jeff.main@usda.gov

[Custom Average Tool \(CAT\) Graphing tool and aggregated data source.](#)

generally good. Movement of cucumbers out of Michigan expected to increase as more growers start harvesting. A first report has been issued this week. Trading is fairly active with prices unchanged. Cucumber movement out of Eastern North Carolina expected to continue to decrease seasonally as most shippers are finished for the season. Currently, no F.O.B. is being issued, and a last report has been issued. Out of Western North Carolina, movement of cucumbers expected to increase seasonally as more producers begin to harvest over the next five days. Currently, no F.O.B. is being issued due to supplies being insufficient and in too few hands.

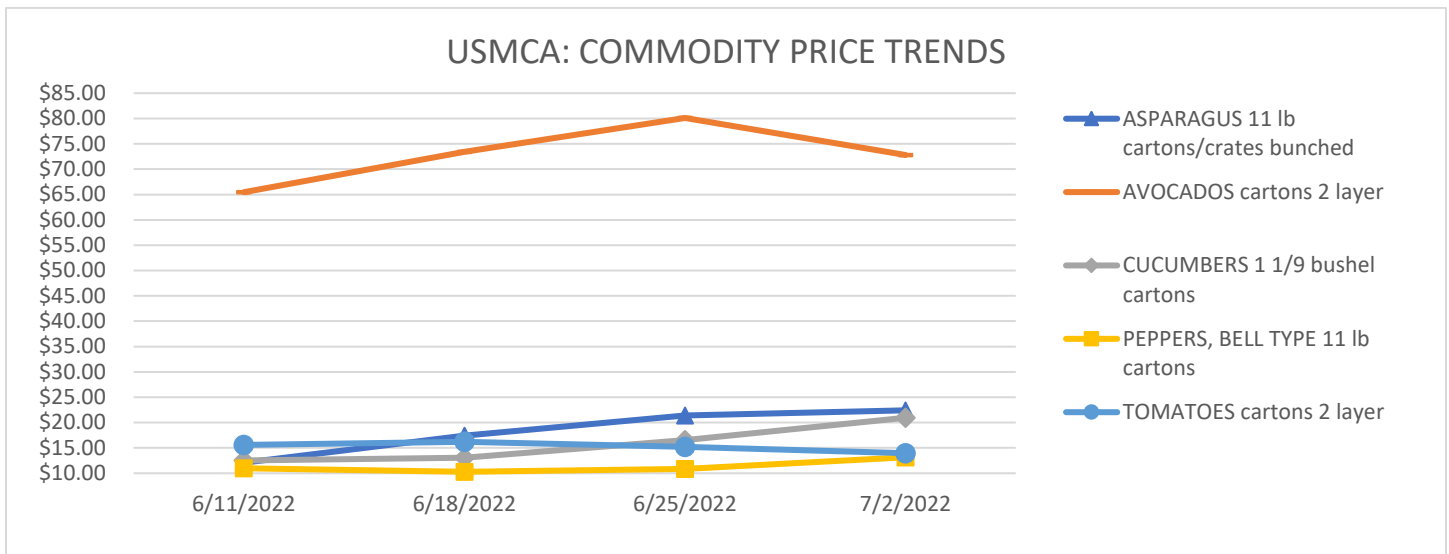
Movement of green bell peppers out of South Georgia expected to decrease seasonally as most shippers are finished for the season. Some growers are going back to spot harvest fields that were previously considered finished, but most are done for the season and planning for the fall. Trading is moderate and prices generally unchanged. Quality is being reported as generally good. A last report has been issued. San Joaquin Valley California movement of green bell peppers is expected to increase seasonally. Trading early moderate, late fairly active. Prices are trending higher, and quality is generally good. Harvest of red bell peppers expected to begin the week of July 3rd. Movement of green bell peppers out of Eastern North Carolina expected to increase seasonally. Trading moderate with prices higher. Western North Carolina movement of green bell peppers expected to increase seasonally as more producers begin to harvest over the next five to eight days. Currently, no F.O.B. is being reported, but a first report was issued.

Movement of tomatoes out of Florida West and South Carolina is expected to decrease as growers finish the season. Supplies are insufficient and in too few hands to establish a market with a last report being issued. Tomato movement from Mexico crossing through Texas is expected about the same. Trading is moderate and prices on loose slightly lower and two-layers generally unchanged. Quality generally good. Movement of tomatoes from Mexico crossing through Otay Mesa, California expected to increase seasonally. Trading of 5x5-5x6s fairly active at slightly lower prices with others fairly active and prices generally unchanged. Quality generally good. Movement of tomatoes out of Central District California expected to increase seasonally. Trading early fairly slow, late active with prices higher. Quality generally good. Movement of tomatoes from Southeastern Arkansas is expected to slightly decrease. Heavy rains over the weekend have shortened the tomato shipping season for most shippers. A normal season would typically end in about a week from now. Even though this season began a week earlier, most shippers shipped about the same number of days they normally do. Trading active at slightly lower prices. Quality being reported as generally good. Movement of tomatoes out of Alabama is expected to increase as more growers start the season. Light harvest has begun and is expected to continue for the next eight days. Demand is moderate for very light supplies but will increase as more growers get fully underway. A first report has been issued this week, but sufficient volume is expected in the next twelve days for the first F.O.B. report. Movement of tomatoes out of Eastern Tennessee and Virginia Eastern Shore expected to start within eight days with light harvest. Sufficient volume is expected within twelve days for the first F.O.B. report, but a first report was issued this week.

The following table provides a four-week price trend of the highest traded commodities this week.

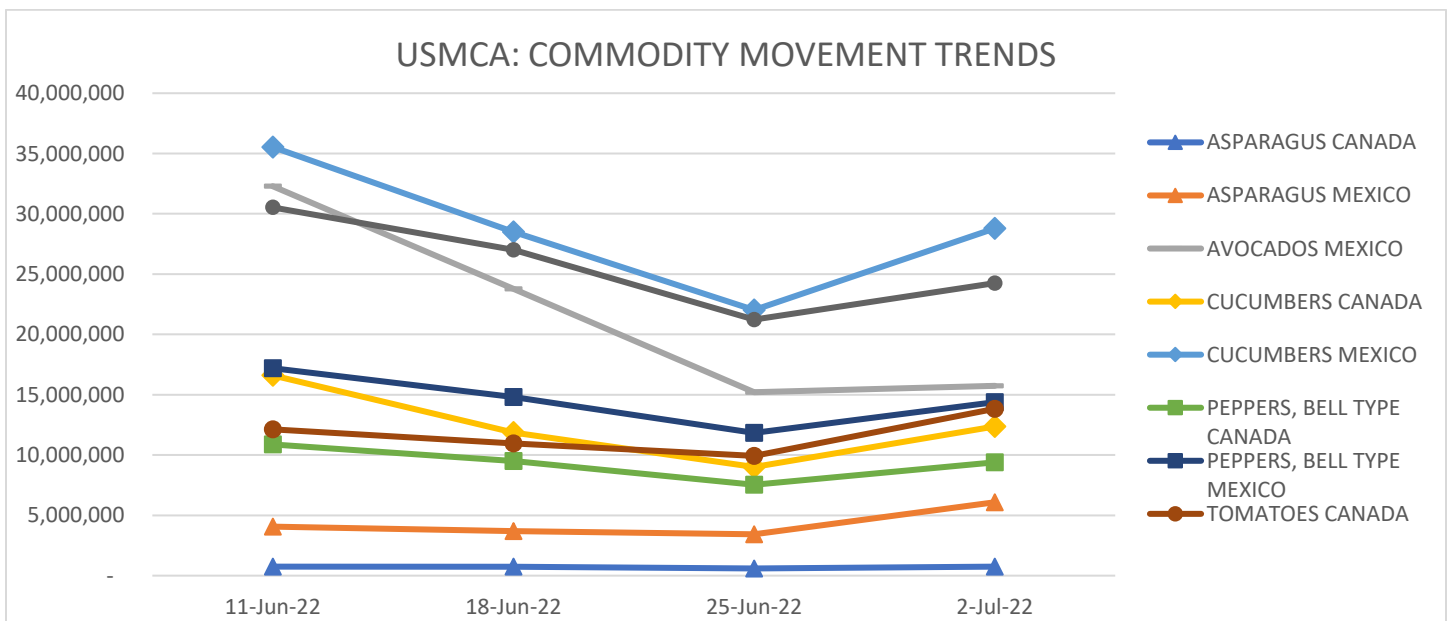
Four Week Price Trend in U.S. Dollars

Commodity	Package	6/11/2022	6/18/2022	6/25/2022	7/2/2022
ASPARAGUS	11 lb. cartons/crates bunched	\$ 12.08	\$ 17.42	\$ 21.42	\$ 22.42
AVOCADOS	cartons 2 layer	\$ 65.46	\$ 73.46	\$ 80.11	\$ 72.82
CUCUMBERS	1 1/9-bushel cartons	\$ 12.52	\$ 13.09	\$ 16.53	\$ 20.95
PEPPERS, BELL TYPE	11 lb. cartons	\$ 11.00	\$ 10.29	\$ 10.86	\$ 13.14
TOMATOES	cartons 2 layer	\$ 15.56	\$ 16.20	\$ 15.20	\$ 13.96

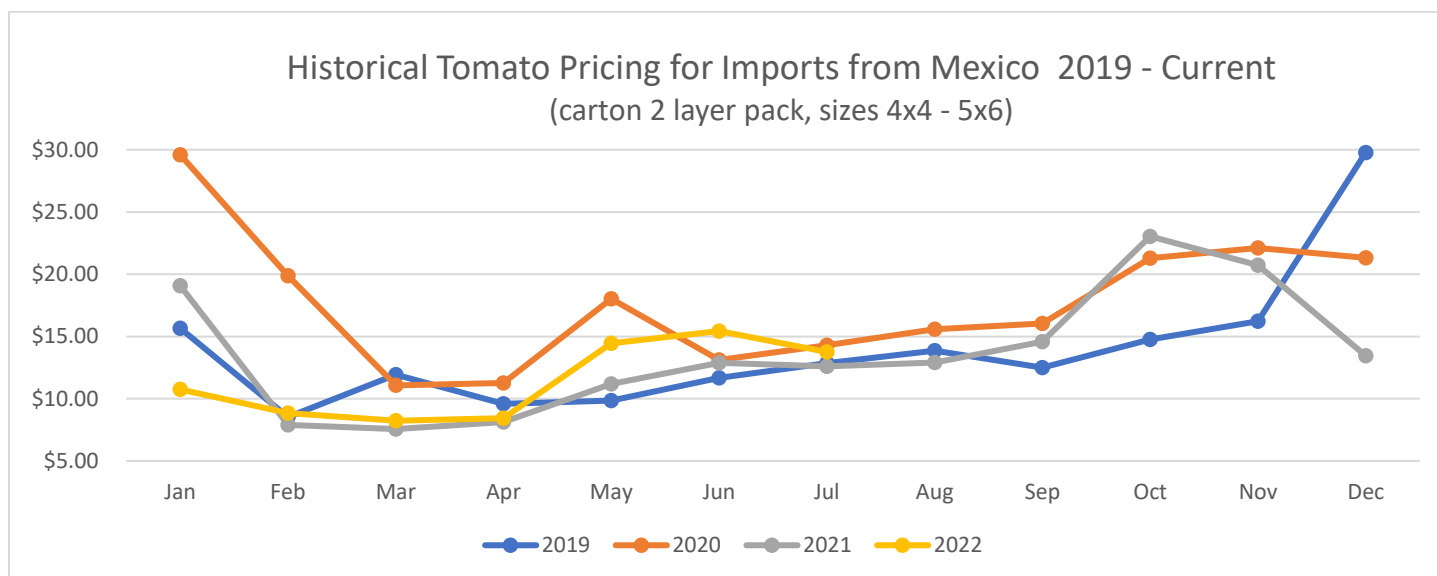


Four Week Movement in Pounds

COMMODITY	ORIGIN	11-Jun-22	18-Jun-22	25-Jun-22	2-Jul-22
ASPARAGUS	CANADA	733,756	737,586	595,827	736,307
	MEXICO	4,064,377	3,691,391	3,429,608	6,084,902
AVOCADOS	MEXICO	32,290,770	23,768,421	15,210,351	15,736,152
CUCUMBERS	CANADA	16,602,144	11,860,010	9,008,801	12,355,593
	MEXICO	35,536,053	28,499,175	22,026,773	28,804,766
PEPPERS, BELL TYPE	CANADA	10,878,935	9,503,648	7,537,412	9,397,879
	MEXICO	17,198,517	14,818,375	11,838,060	14,382,828
TOMATOES	CANADA	12,126,722	10,954,316	9,930,061	13,834,580
	MEXICO	30,531,799	27,025,494	21,233,530	24,263,400



The following chart, *Historical Tomato Pricing for Imports from Mexico*, is a four-year view of Mexican tomato prices at shipping point. Tomatoes are shown as they are the most consistently traded year-round. They have the highest volume of product moving between the U.S., Mexico, and Canada, along with a high level of market coverage of tomatoes by USDA Market News.



To be regarded as "seasonal and perishable," agricultural products must meet the following conditions: (1) the products are fresh or chilled products falling under the following HS2002 tariff codes: 0701, 0702, 0703, 0704, 0705, 0706, 0707, 0708, 0709, 0803, 0804, 0805, 0806, 0807, 0808, 0809, 0810; (2) the products are marketed in raw form for consumption without "further processing" ("further processing" refers to e.g. crushing, juicing, canning, or any other process that transforms the product from its raw form); and (3) the products normally are marketed within eight weeks after harvesting.

For information on the imported volume and prices of the remaining Seasonal and Perishable commodities listed below please visit:

<https://www.marketnews.usda.gov/mnp/fv-home>

- Potatoes
- Tomatoes
- Onions, shallots, garlic, leeks, and other alliaceous vegetables
- Cabbages, cauliflower, kohlrabi, kale, and similar edible brassicas
- Lettuce (*Lactuca sativa*) and chicory (*Cichorium* spp.)
- Carrots, turnips, salad beets (salad beetroot), salsify, celeriac, radishes, and similar edible roots
- Cucumbers, including gherkins
- Leguminous vegetables, shelled or unshelled
- Other vegetables, fresh or chilled: asparagus, eggplants, celery, mushrooms and truffles, peppers (*Capsicum* or of the genus *Pimenta*), spinach, artichokes, olives, pumpkins, squash, and gourds
- Bananas and plantains
- Dates, figs, pineapples, avocados, guavas, mangoes, and mangosteens
- Citrus fruit
- Grapes
- Melons (including watermelons) and papayas (papaws)
- Apples, pears, and quinces
- Apricots, cherries, peaches (including nectarines), plums (including prune plums) and sloes
- Other fruit: strawberries, raspberries, blackberries, mulberries, loganberries, black, white, or red currants and gooseberries (other than kiwifruit), cranberries, blueberries, and other fruits of the genus *Vaccinium*, kiwifruit, durians, persimmons,
- Other berries; tamarinds