



# Weekly Market Information

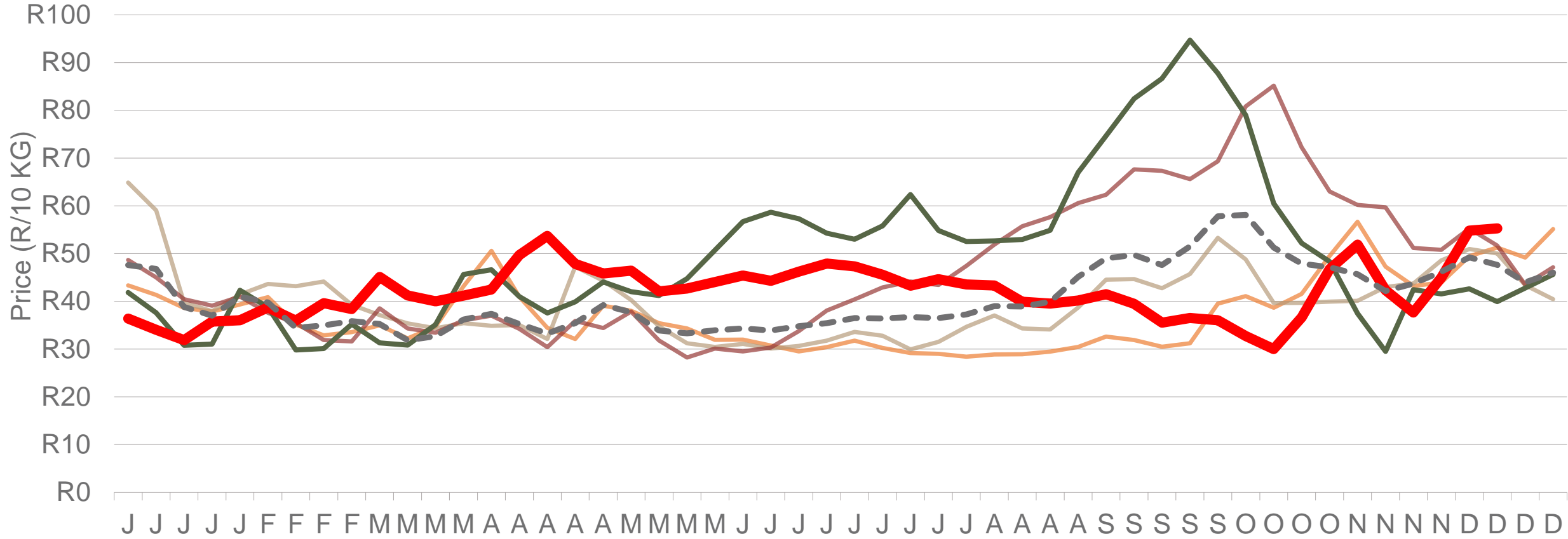
09 December 2022







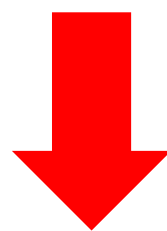
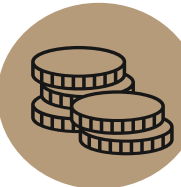



Potatoes  
Aartappels SA

[www.potatoes.co.za](http://www.potatoes.co.za)

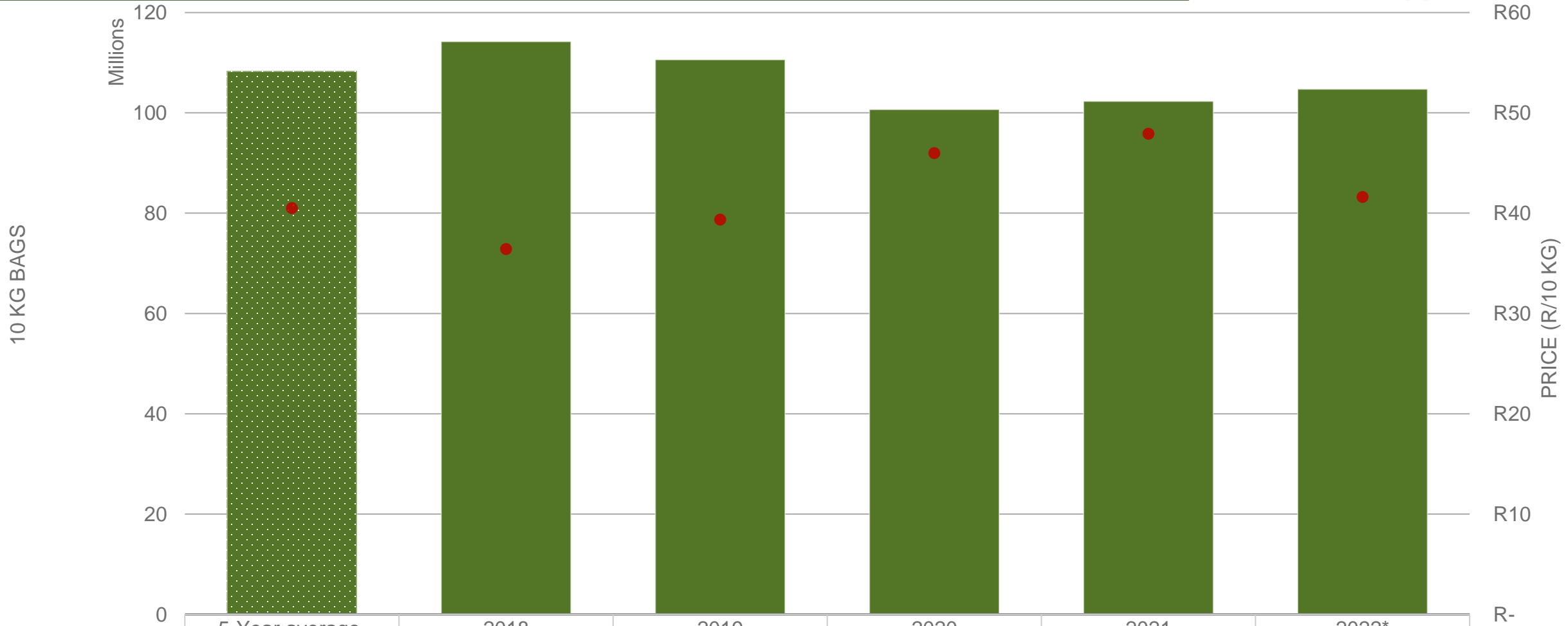
# Average weekly price – all markets & all classes



					
2018	2019	2020	2021	2022	5-year average
 <p>Number of bags sold</p> <p><b>14%</b> (Week on Week)</p> <p></p>			 <p>Average weekly price</p> <p><b>23%</b> (Week on week)</p> <p></p>		

*Data disclaimer: Potatoes SA does not take responsibility for the accuracy or interpretation of company data re-purposed by 3rd parties*

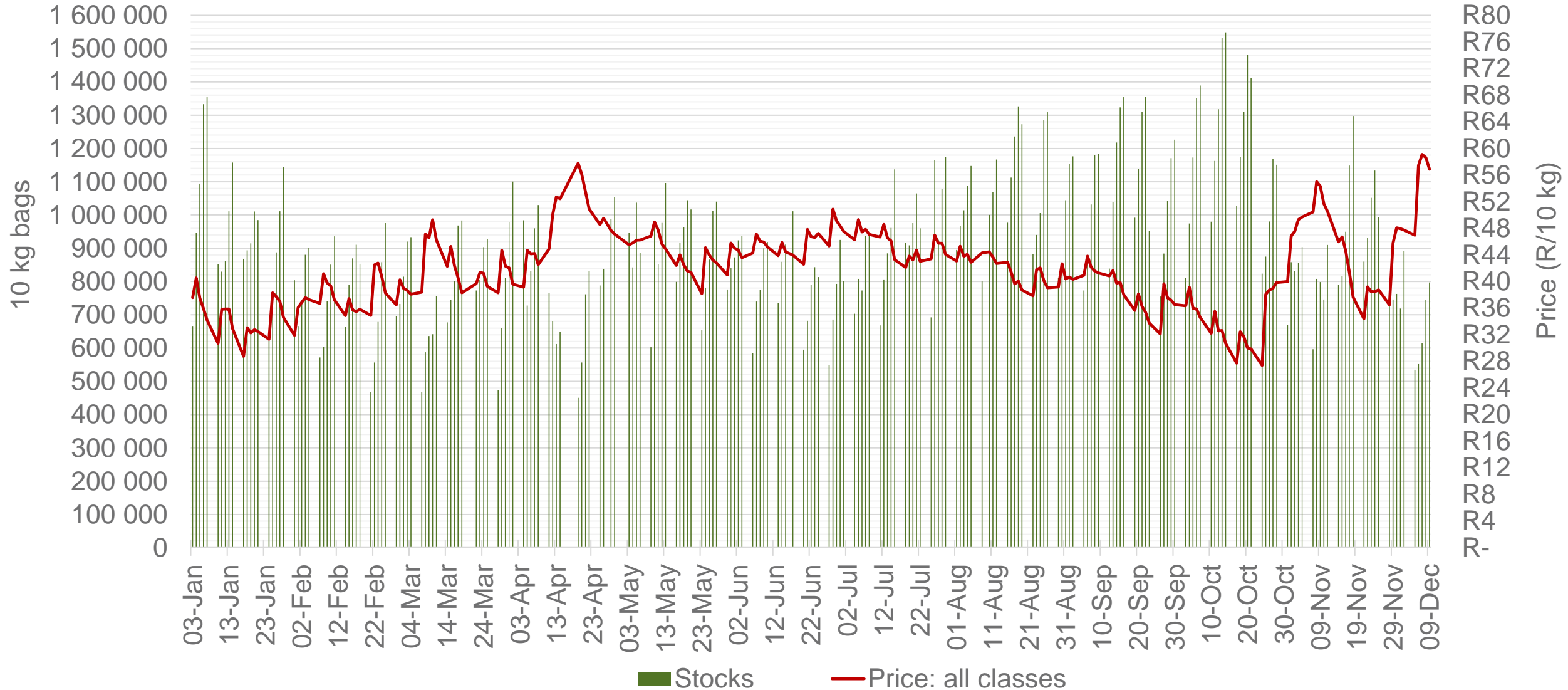
# Cumulative total number of 10 kg bags sold on markets: First 49 weeks of the year 2022



■ Number of bags sold	108 275 281	114 208 125	110 600 886	100 670 495	102 292 742	104 720 763
● Average price	R 40.50	R 36.41	R 39.34	R 45.98	R 47.90	R 41.61

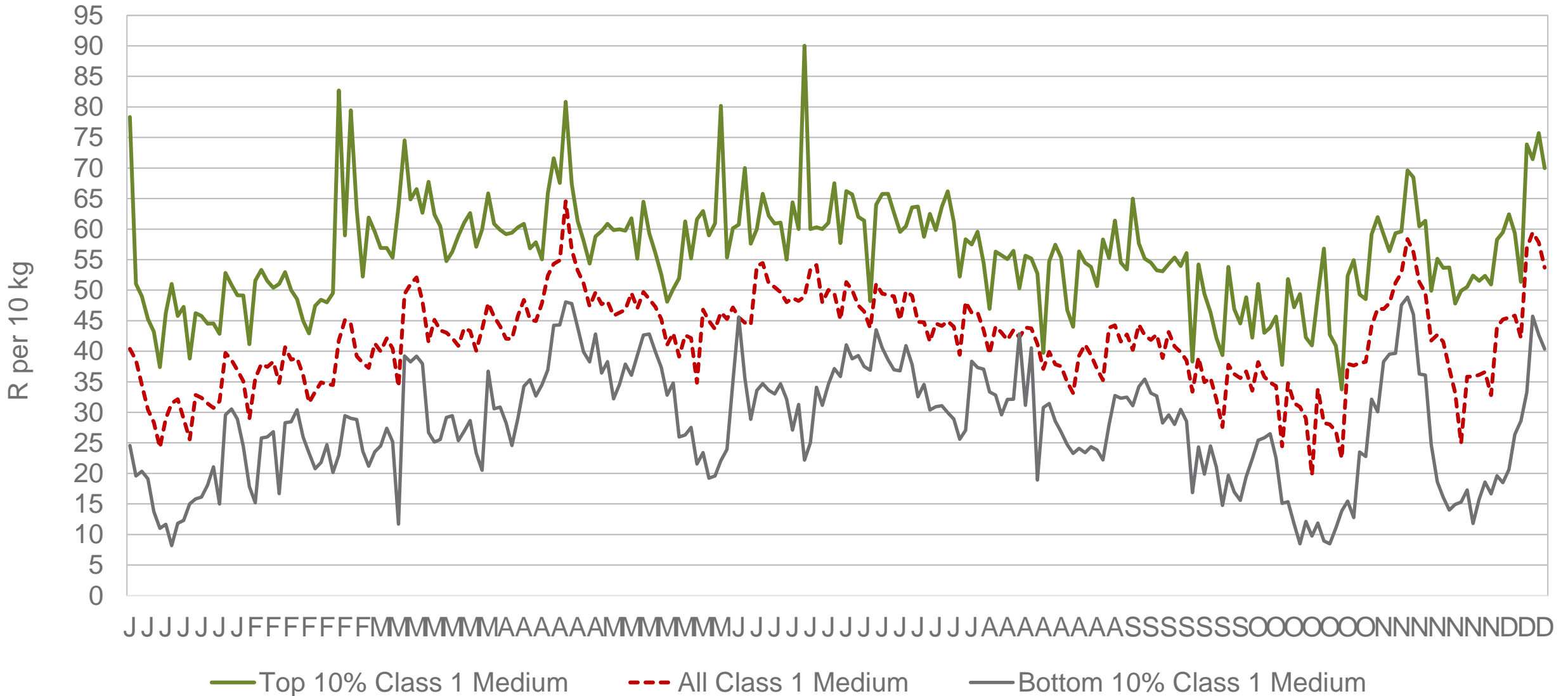
Sold 1 315 470 bags **less** than the **5-year average** (2018 to 2022) of the first 49 weeks of each year.

# RSA daily Price versus Daily Available stocks (all classes & all sizes)



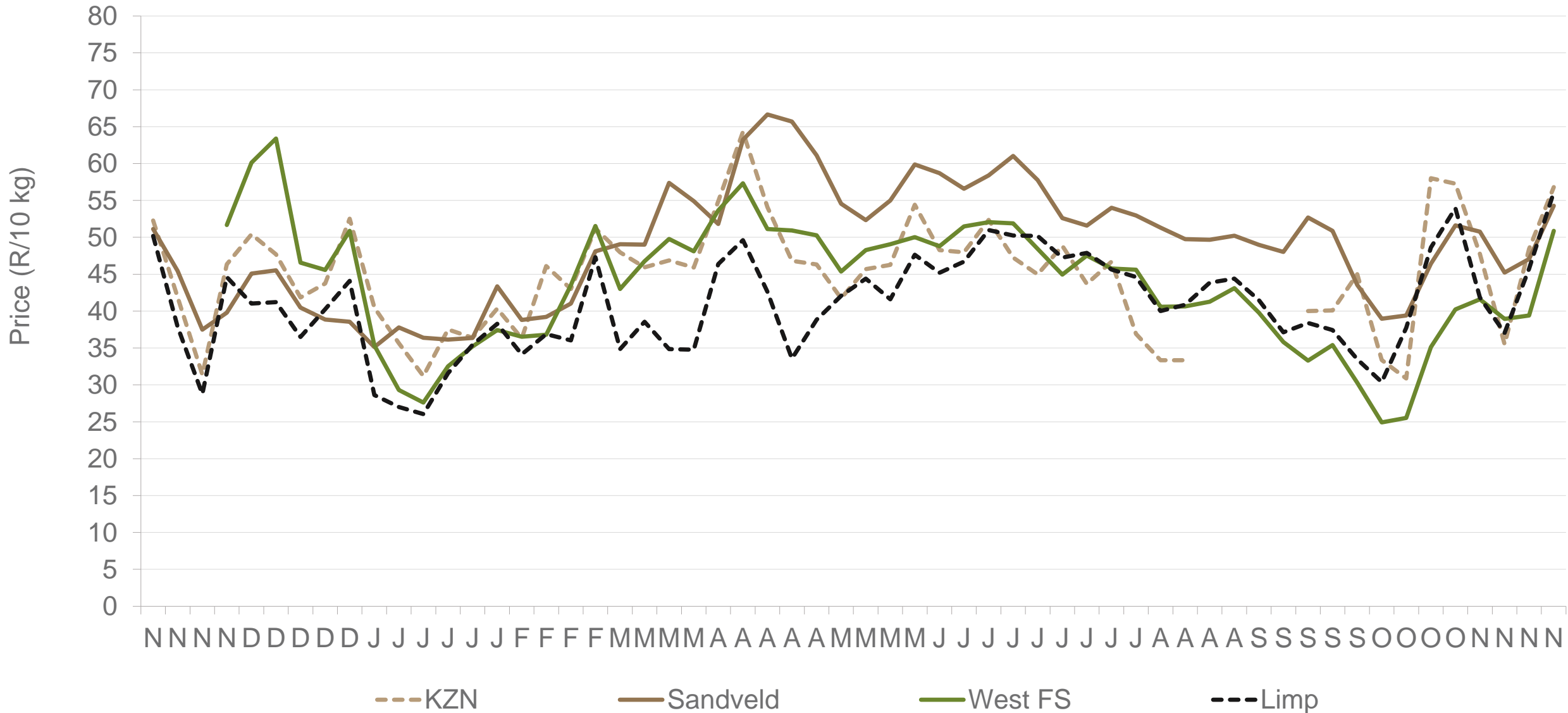
Data disclaimer: Potatoes SA does not take responsibility for the accuracy or interpretation of company data re-purposed by 3rd parties

# JHB market daily : Top 10% versus Bottom 10% prices – Class 1 Medium (Since January 2022)

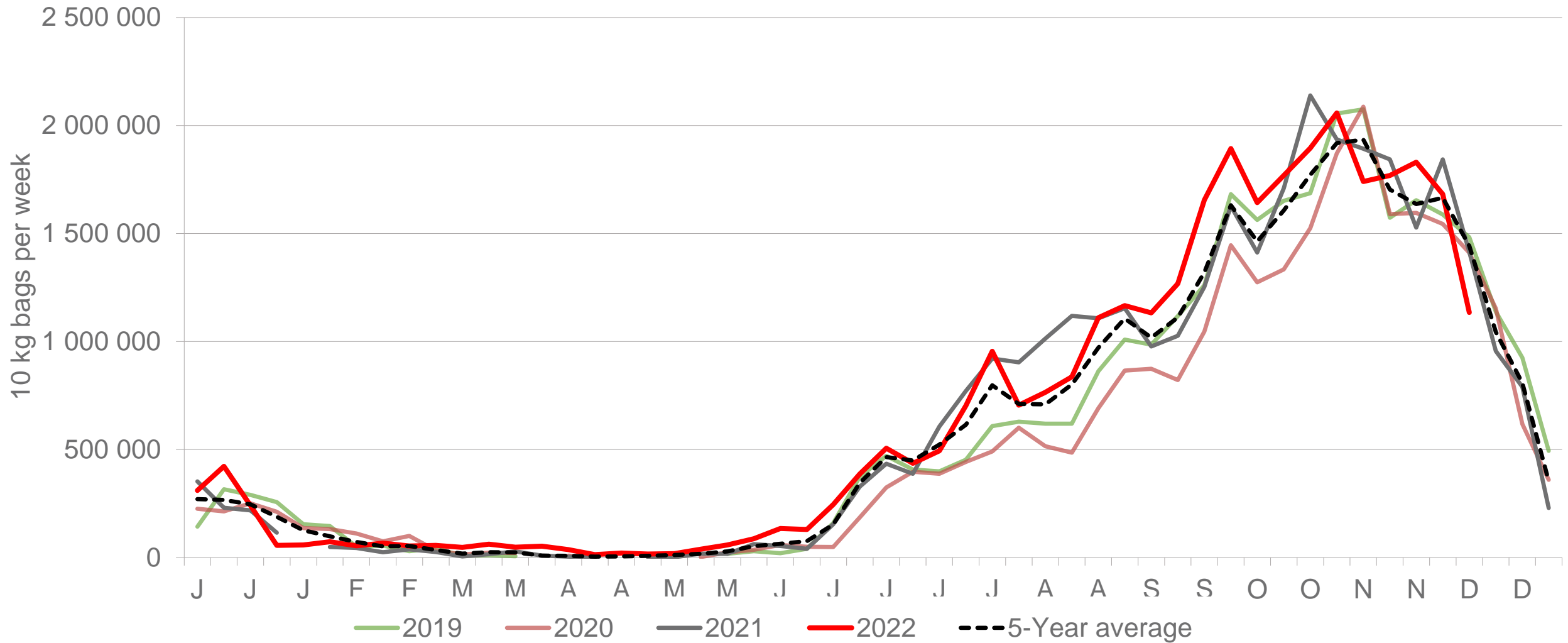


Data disclaimer: Potatoes SA does not take responsibility for the accuracy or interpretation of company data re-purposed by 3rd parties

# Average Class 1 Medium prices in regions



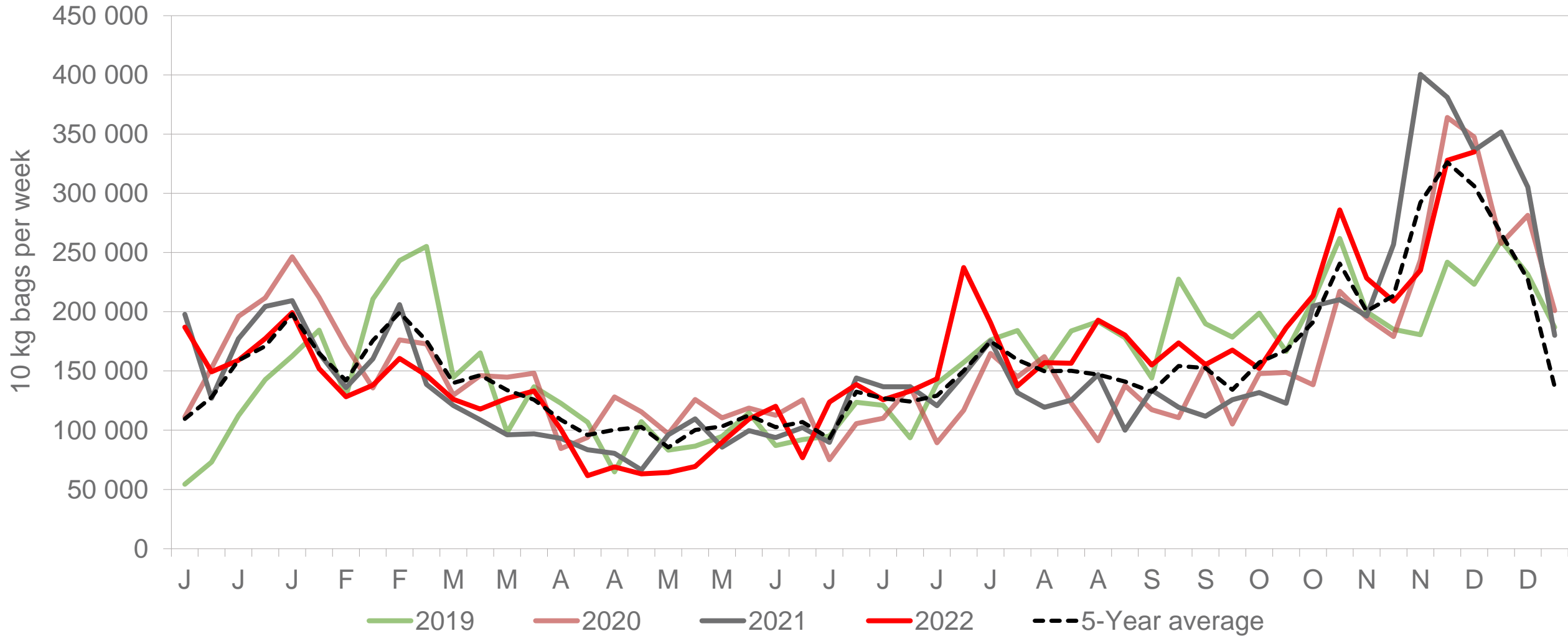
# Limpopo: Amount of 10 kg bags per week sold on FPMs (all classes)



Sold 2 304 512 bags **more** than the **5-year average** (2017 to 2022) of the first 49 weeks of each year.

*Data disclaimer: Potatoes SA does not take responsibility for the accuracy or interpretation of company data re-purposed by 3rd parties*

# Sandveld: Amount of 10 kg bags per week sold on FPMs (all classes)

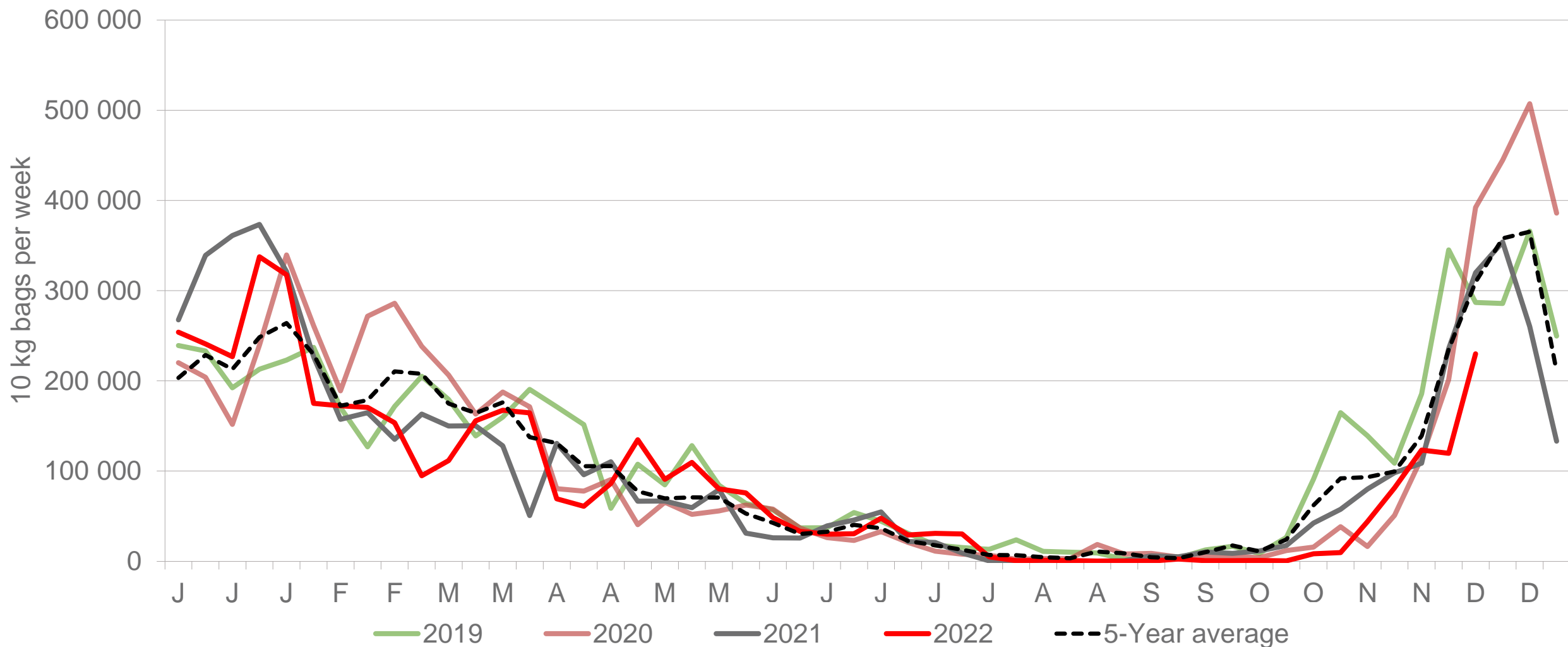


Sold 133 075 bags more than the **5-year average** (2017 to 2022) of the first 49 weeks of each year.

*Data disclaimer: Potatoes SA does not take responsibility for the accuracy or interpretation of company data re-purposed by 3rd parties*

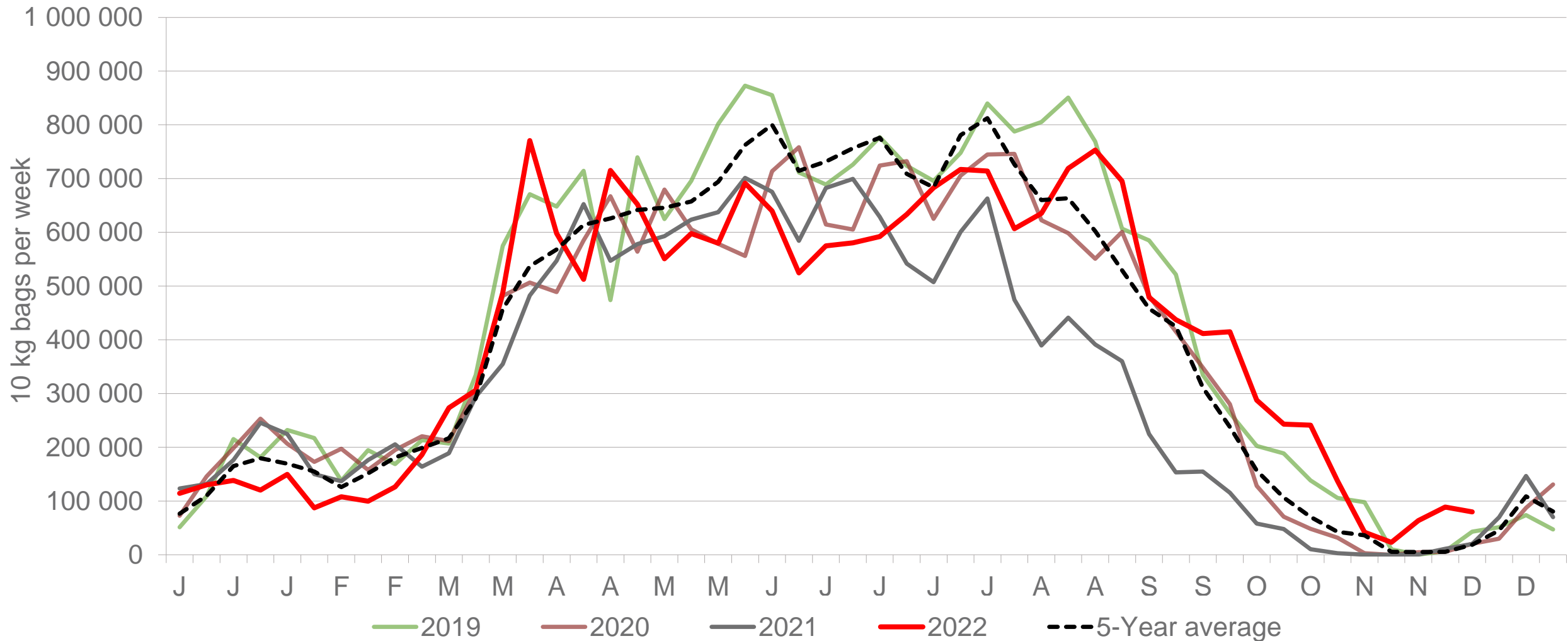


# KwaZulu-Natal: Amount of 10 kg bags per week sold on FPMs (all classes)



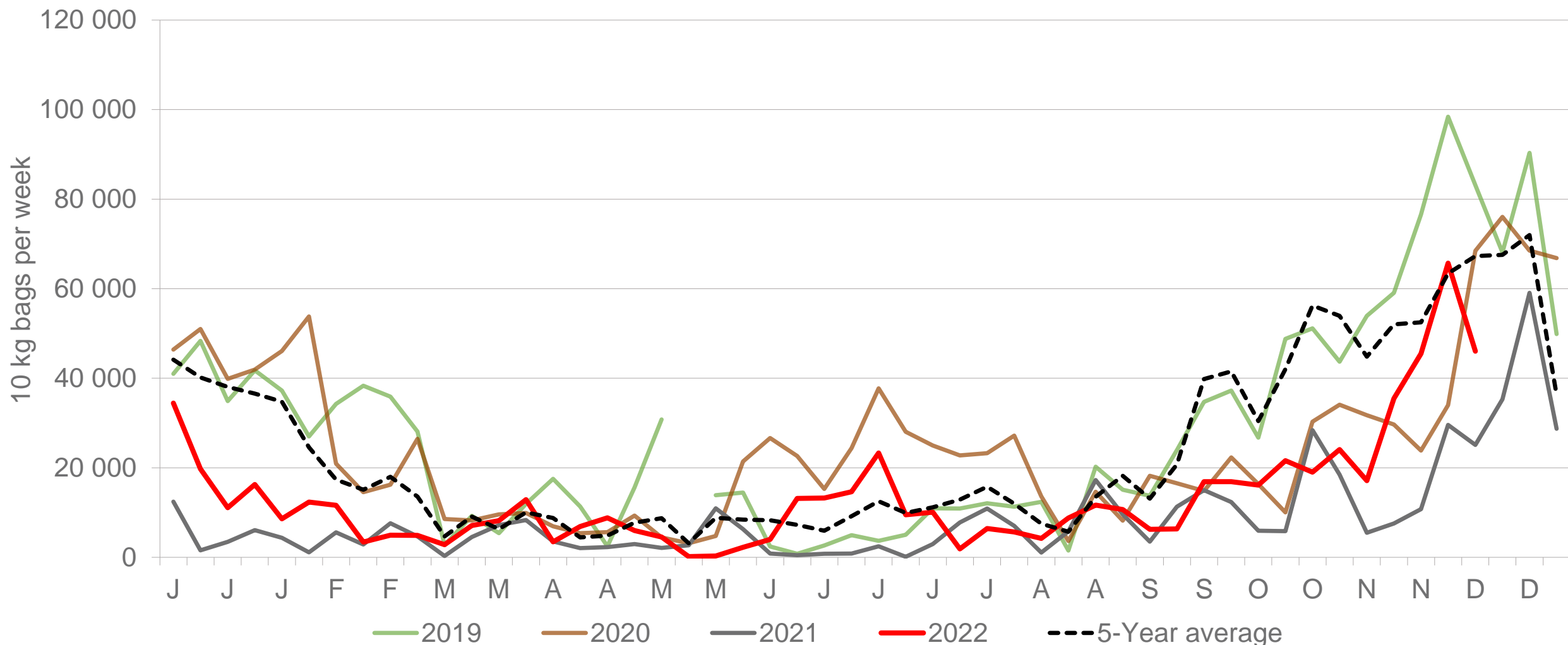
Sold 508 851 bags **less** than the **5-year average** (2017 to 2022) of the first 49 weeks of each year.

# Western Free State : Amount of 10 kg bags per week sold on FPMs (all classes)



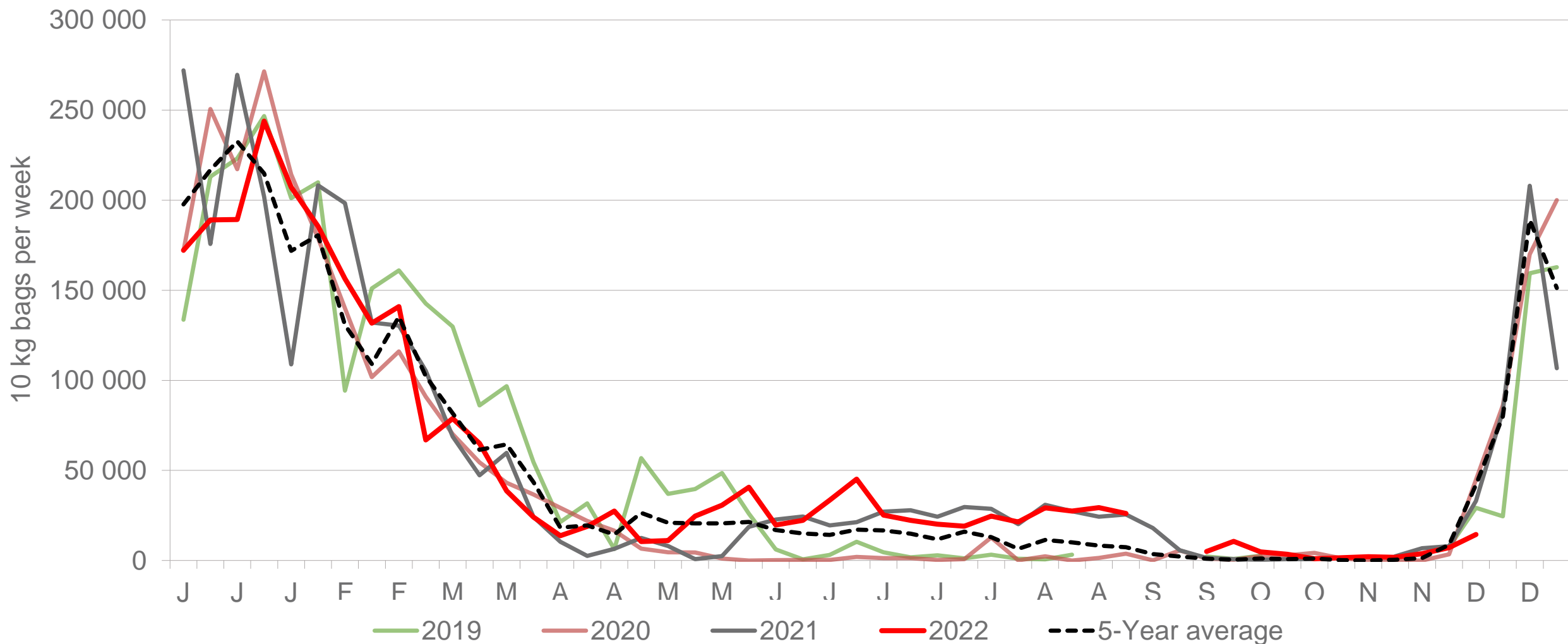
Sold 33 895 bags **less** than the **5-year average** (2017 to 2022) of the first 49 weeks of each year.

# Eastern Cape: Amount of 10 kg bags per week sold on FPMs (all classes)



Sold 429 896 bags **less** than the **5-year average** (2017 to 2022) of the first 49 weeks of each year.

# Gauteng: Amount of 10 kg bags per week sold on FPMs (all classes)



Sold 141 713 bags more than the **5-year average** (2017 to 2022) of the first 49 weeks of each year.

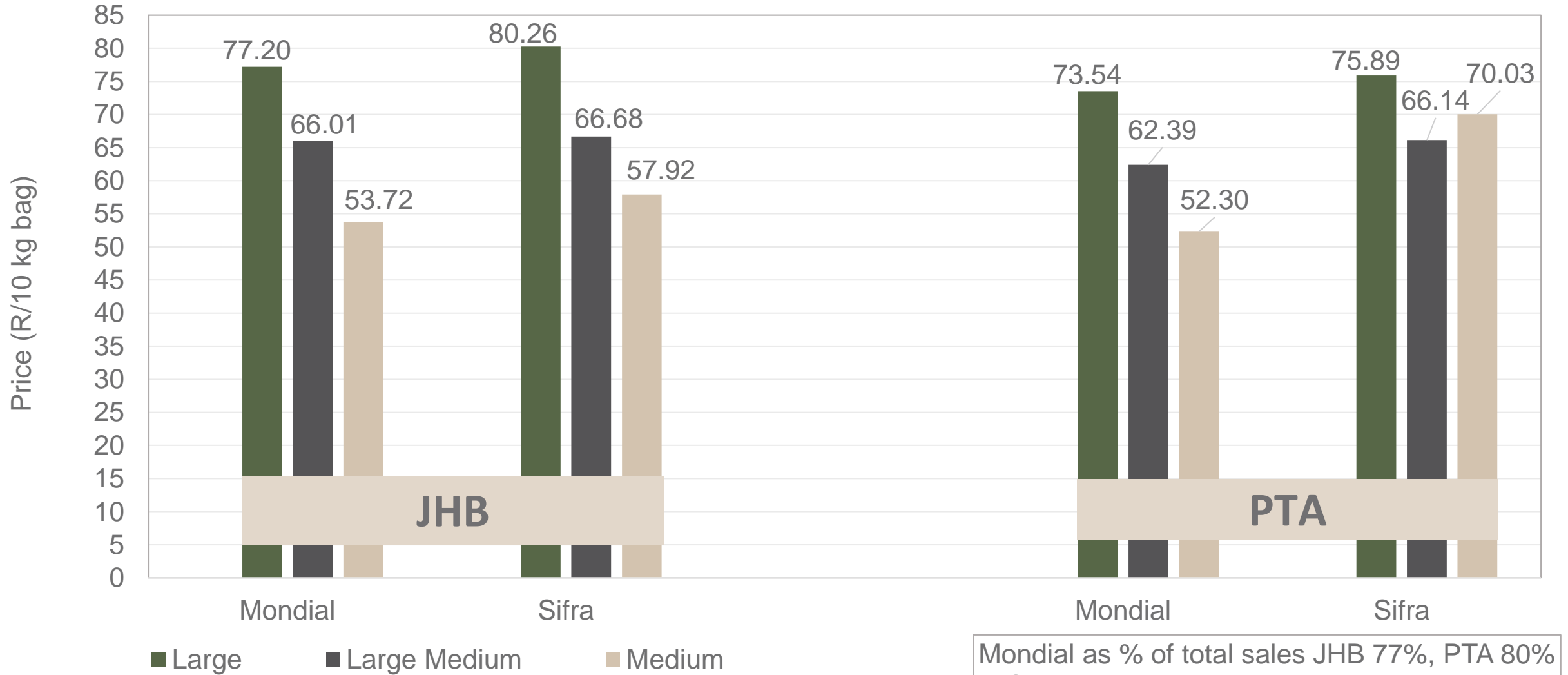
# Average weekly prices and volumes for 10 kg bags of potatoes sold on selected markets from selected production regions



Klas & Grootte	Limpopo										Sandveld		KwaZulu-Natal				North West				All Regions	
	JOH		PRE		DUR		SPR		KLE		CAP		DUR		PIE		JOH		PRE		All Markets	
	Volume	Prices	Volume	Prices	Volume	Prices	Volume	Prices	Volume	Prices	Volume	Prices	Volume	Prices	Volume	Prices	Volume	Prices	Volume	Prices	Volume	Prices
	10kg	R/10kg	10kg	R/10kg	10kg	R/10kg	10kg	R/10kg	10kg	R/10kg	10kg	R/10kg	10kg	R/10kg	10kg	R/10kg	10kg	R/10kg	10kg	R/10kg	10kg	R/10kg
1L	88 385	77.09	56 968	73.47	6 415	62.44	22 480	71.78	6 638	79.17	28 848	54.05	20 380	61.91	10 353	57.86	10 961	78.73	9 566	75.51	370 408	71.18
1L/M	156 689	64.30	88 412	61.46	15 342	59.66	32 863	53.55	13 799	66.08	46 090	52.18	27 275	59.90	11 859	53.25	7 602	80.12	5 797	76.93	535 079	61.33
1M	155 688	53.91	64 670	52.56	11 964	55.93	23 290	43.14	7 773	59.87	41 416	50.21	46 371	56.79	9 272	49.26	5 866	71.53	2 533	71.70	482 621	53.45
1S	46 579	35.05	12 172	35.56	1 772	46.70	6 060	25.95	1 325	39.54	18 111	37.00	17 663	45.74	4 334	39.03	418	45.81	499	37.06	140 405	38.03
1S/M	41 527	40.92	14 288	40.23	1 755	47.28	3 882	37.05	2 785	49.31	3 360	39.53	3 841	34.09	935	41.42	1 849	62.26	660	54.73	95 673	42.49
1XL	-	-	-	-	-	-	-	-	-	-	-	-	-	-	-	-	-	-	-	-	-	-
1XS	28 961	24.07	-	-	-	-	-	-	-	-	-	-	-	-	-	-	2 313	67.91	-	-	34 512	26.66
1XXS	-	-	-	-	-	-	-	-	-	-	-	-	-	-	-	-	-	-	-	-	-	-
2L	11 316	67.30	11 126	66.31	110	60.00	2 224	57.51	1 296	76.96	12 637	48.38	1 478	53.67	1 704	53.30	609	65.65	220	51.45	61 775	60.50
2L/M	20 943	54.16	18 777	55.78	550	50.00	3 818	50.53	3 146	61.00	11 703	47.22	2 234	55.71	1 505	51.08	2 090	61.48	330	49.33	103 600	53.69
2M	13 025	47.52	9 389	46.56	220	55.00	3 677	36.53	4 278	52.20	15 446	40.31	2 452	42.73	1 514	44.03	298	49.10	-	-	96 808	44.82
2S	3 189	26.76	1 468	33.93	220	40.00	693	19.08	1 222	37.58	10 127	31.90	517	33.97	601	32.86	-	-	-	-	28 782	33.74
2S/M	3 034	32.85	1 242	37.55	-	-	655	30.73	-	-	461	34.32	82	30.00	41	49.51	-	-	-	-	10 644	33.96
2XL	-	-	-	-	-	-	-	-	-	-	-	-	-	-	-	-	-	-	-	-	-	-
2XS	149	10.94	-	-	-	-	-	-	-	-	-	-	-	-	-	-	-	-	-	-	847	11.16
2XXS	-	-	-	-	-	-	-	-	-	-	-	-	-	-	-	-	-	-	-	-	-	-
3L	1 669	54.09	983	59.84	-	-	3 665	38.72	440	43.91	574	41.67	60	55.00	538	47.19	-	-	-	-	14 239	45.32
3L/M	1 726	44.00	1 446	45.09	-	-	258	47.48	305	60.66	800	38.28	-	-	-	-	-	-	440	50.00	11 477	43.78
3M	3 352	41.94	3 261	44.59	-	-	505	31.15	200	32.27	1 502	35.50	1 663	40.04	2 686	27.93	-	-	-	-	21 557	38.41
3S/M	220	25.00	450	35.93	-	-	-	-	-	-	95	28.00	-	-	550	23.51	-	-	-	-	3 587	27.26
3XS	-	-	-	-	-	-	-	-	-	-	-	-	-	-	-	-	-	-	-	-	620	10.27
3XXS	-	-	-	-	-	-	-	-	-	-	-	-	-	-	-	-	-	-	-	-	-	-
4L	-	-	458	56.00	-	-	-	-	-	-	-	-	-	-	-	-	-	-	-	-	1 703	48.81
4L/M	-	-	1 120	51.12	-	-	-	-	-	-	-	-	-	-	-	-	-	-	-	-	2 531	37.13
4M	-	-	110	30.00	-	-	-	-	-	-	-	-	85	40.00	602	30.28	-	-	-	-	3 411	27.26
4S	-	-	-	-	-	-	-	-	-	-	-	-	-	-	-	-	-	-	-	-	3	42.67
4S/M	-	-	-	-	-	-	-	-	-	-	-	-	-	-	-	-	-	-	-	-	428	10.44
Total	576 452	56.07	293 256	57.71	39 787	56.45	107 182	50.23	43 387	62.32	201 935	46.42	126 439	54.86	47 109	48.75	32 006	73.93	21 060	72.16	2 055 853	55.28

Data disclaimer: Potatoes SA does not take responsibility for the accuracy or interpretation of company data re-purposed by 3rd parties

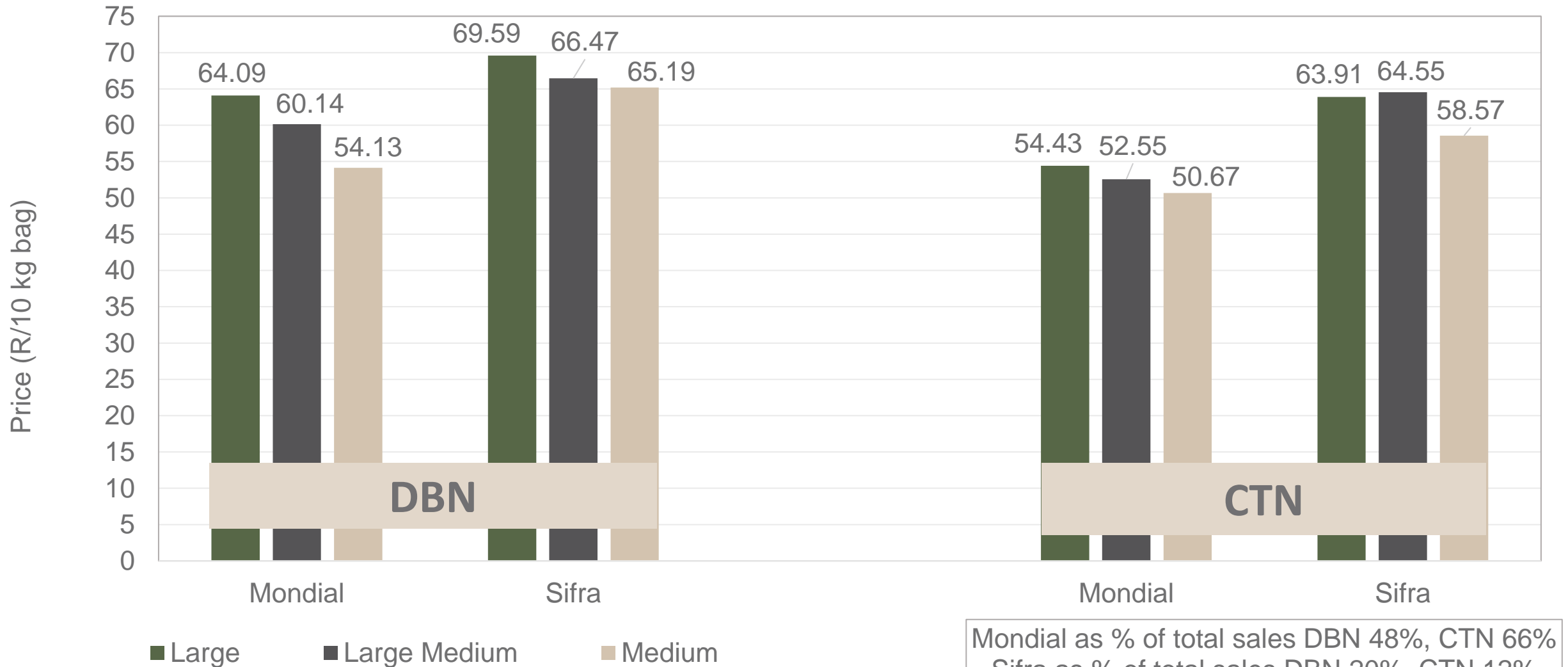
# PTA & JHB markets: Average Prices - Different Sizes (only 10 kg bags)



Mondial as % of total sales JHB 77%, PTA 80%  
Sifra as % of total sales JHB 11%, PTA 8%

Data disclaimer: Potatoes SA does not take responsibility for the accuracy or interpretation of company data re-purposed by 3rd parties

# DBN & CTN markets: Average Prices - Different Sizes (only 10 kg bags)



Mondial as % of total sales DBN 48%, CTN 66%  
 Sifra as % of total sales DBN 20%, CTN 12%

# Hectares planted to date for season 2022 versus 2021

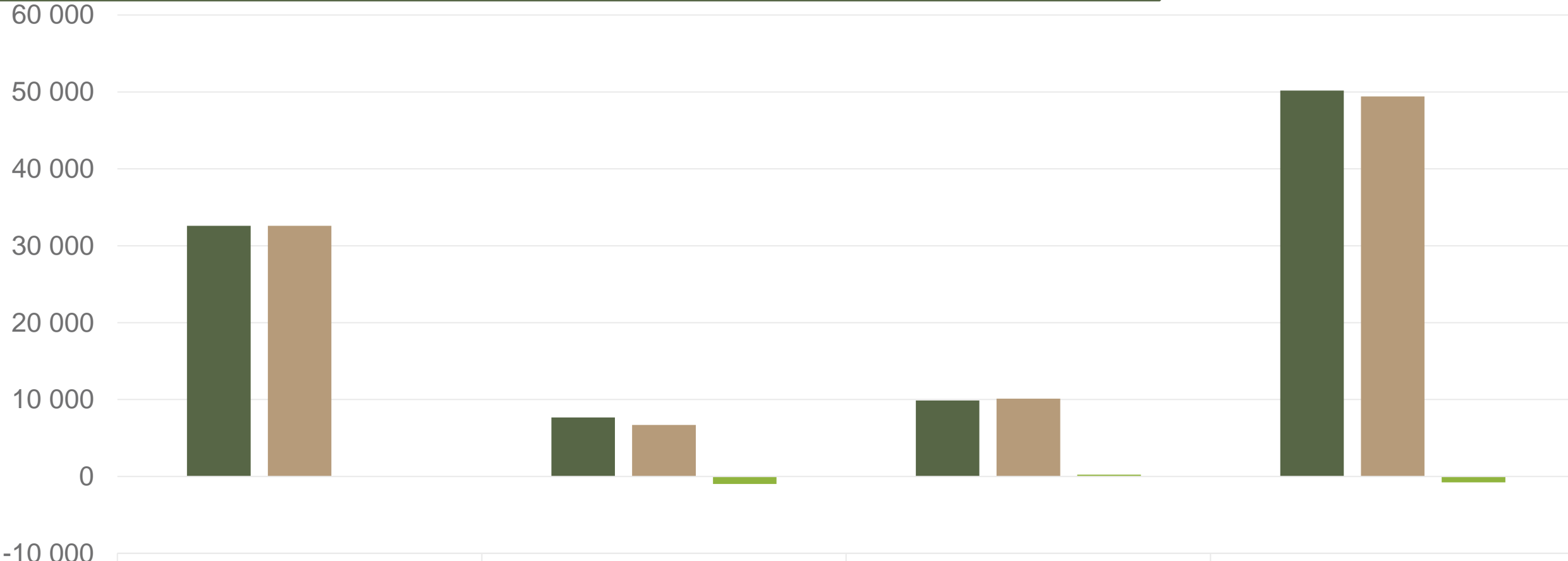


	Table	Process	Seed	Total
■ 2021	32 602	7 682	9 889	50 174
■ 2022	32 589	6 706	10 121	49 416
■ Changes	-14	-976	232	-757

Regions finished planting: North West, Eastern Free State, Western Free State, South Western Free State, KZN, North Eastern Cape, Limpopo (early and main), Sandveld (summer, early winter), Ceres, Eastern Cape, Southern Cape and Northern Cape


**Data disclaimer: Potatoes SA does not take responsibility for the accuracy or interpretation of company data re-purposed by 3rd parties**





# Thank you for your time

Feel free to contact us

 [jano@potatoes.co.za](mailto:jano@potatoes.co.za)  
[dikgetho@potatoes.co.za](mailto:dikgetho@potatoes.co.za)

 +27 (0)12 349 1906

 6 De Havilland Crescent  
Persequor Techno Park  
Persequor Park  
Pretoria

 [www.potatoes.co.za](http://www.potatoes.co.za)



Potatoes  
Aartappels SA