



Specialty Crops Market News Division U.S. Mexico Canada Agreement Seasonal Perishable Products Weekly Update

Agricultural Marketing Service

Issued Weekly

Friday, June 16, 2023

Update for Week of June 11-17, 2023

This report provides trend analysis of the volume and prices of Seasonal Perishable commodities. Volume represents current week and prices represent open (spot) market sales by first handlers on product of generally good quality and condition unless otherwise stated and may include promotional allowances or other incentives. The charts provide graphic representation of the volume and prices of the major commodities this week based on seasonal volume.

On Sunday June 11th, a section of Interstate 95 in Philadelphia, Pennsylvania between Woodhaven Road and Aramingo Avenue exits, collapsed due to a tanker truck carrying fuel that exploded underneath I-95. The affected portion of I-95 carries between 150,000 to 160,000 vehicles per day, of which 14,000 are commercial trucks. According to the American Trucking Association, the I-95 collapse will “likely” have a significant impact on the supply chain industry. Disruptions are expected to affect the City of Philadelphia, the nearby ports of entry terminals, commercial truck drivers, regional warehouses, local commuters and the immediate surrounding areas will also be affected. Traffic will be detoured through mostly towns and non-interstate highways with more than 60 traffic lights. Detours will inevitably add another 40 miles to the daily commute of truck drivers, costing more in fuel costs, adding longer wait times, delays and the frustration that comes with stop and go traffic. Secretary of Transportation, Pete Buttigieg, vowed federal help to fix the collapsed interstate and also warned of possible supply chain impacts. “If a route is disrupted or it’s longer or trucks have to wait, that finds its way into the cost of goods,” Buttigieg said on Tuesday during a visit in Philadelphia. Early reports coming in by commercial truck drivers are reporting adding at least half an hour to their morning commute when leaving for work assignments and close to an hour in the afternoon when returning back to the workplace.

Movement of asparagus from Peru through South Florida ports of entry is expected to increase. Trading moderate. Prices higher. 11-pound cartons bunched green jumbo mostly 33.75-34.75, extra-large 26.75-31.75, large mostly 20.00-22.95 and standard mostly 20.90-22.75. White supplies insufficient to quote. Supplies are moderate. Quality and condition are reported as variable but generally good. Movement of asparagus crossings from Mexico through Arizona, California and Texas is expected to remain about the same. Trading moderate. Prices slightly higher. 11-pound cartons/crates bunched green jumbo 21.75-24.75, large mostly 21.75-22.75 and standard mostly 20.75. Extra services included. No quality reported. Movement of asparagus out of Michigan is expected to remain about the same. Trading fairly active. Prices slightly higher. Pyramid cartons 28-pound bunched green large and standard mostly 53.75-56.75. 11-pound cartons bunched green large and standard mostly 21.75-23.75. Prices remain about steady.

Movement of avocado crossings from Mexico through Texas is expected to decrease slightly. Trading moderate. Prices 40s and 84s higher, 70s lower, others generally unchanged. Cartons 2-layer Hass 32-36s mostly 30.25-31.25, 40s mostly 31.25-32.25, 48s mostly 32.25-33.25, 60s mostly 27.25-28.25, 70s mostly 22.25-24.25 and 84s mostly 19.25-20.25. Extra services included. Avocado movement out of South District California is expected to increase. Trading moderate. Prices 40s, 60-84s higher, others generally unchanged. Cartons 2-layer Hass 32-36s mostly 32.25-34.25, 40-48s mostly 34.25-36.25, 60s mostly 30.25-32.25, 70s 24.26-25.25 and 84s mostly 20.25-21.25. Extra services included. Movement of avocado from Peru imports through Philadelphia and New York City areas ports of entry is expected to increase seasonally. Supplies are insufficient and in too few hands to establish a market. The first F.O.B. report is expected to be issued the week of June 25th.

Movement of cucumber from Mexico crossings through Texas is expected about the same. Trading moderate. Prices medium lower, others generally unchanged. 1 1/9-bushel cartons medium mostly 14.95, large mostly 12.95-13.95, fair

For more information on:

- [Shipping Point Report Details](#)
- [Movement Report Details](#)
- [Generating Custom Reports](#)

For assistance please contact: jeff.main@usda.gov

[Custom Average Tool \(CAT\) Graphing tool and aggregated data source.](#)

quality mostly 10.95-11.95 and ordinary quality mostly 8.95-9.95. Most present shipments from prior bookings and/or previous commitments. Quality variable. Cucumber movement from Mexico crossings through Nogales, Arizona is expected to decrease seasonally. Trading moderate. Prices 24s and 36s generally unchanged, others slightly higher. 1 1/9-bushel cartons medium mostly 18.95, large mostly 12.95-14.95, fair quality mostly 10.95-12.95 and small mostly 10.95-12.95. Cartons 24s mostly 6.95 and 36s mostly 8.95-9.95. Quality variable. Movement of cucumber out of South Georgia is expected to increase. Trading moderate. Prices lower. 1 1/9-bushel cartons/crates medium mostly 12.85 and fair quality mostly 6.85. Cartons 24s 4.85-5.85. Prices were lower later in the week. Quality generally good. Cucumber movement from Mexico crossings through Otay Mesa is expected to increase seasonally. Supplies in too few hands to establish a market. The first F.O.B. report is expected to be issued the week of June 18th. Quality is expected to be generally good.

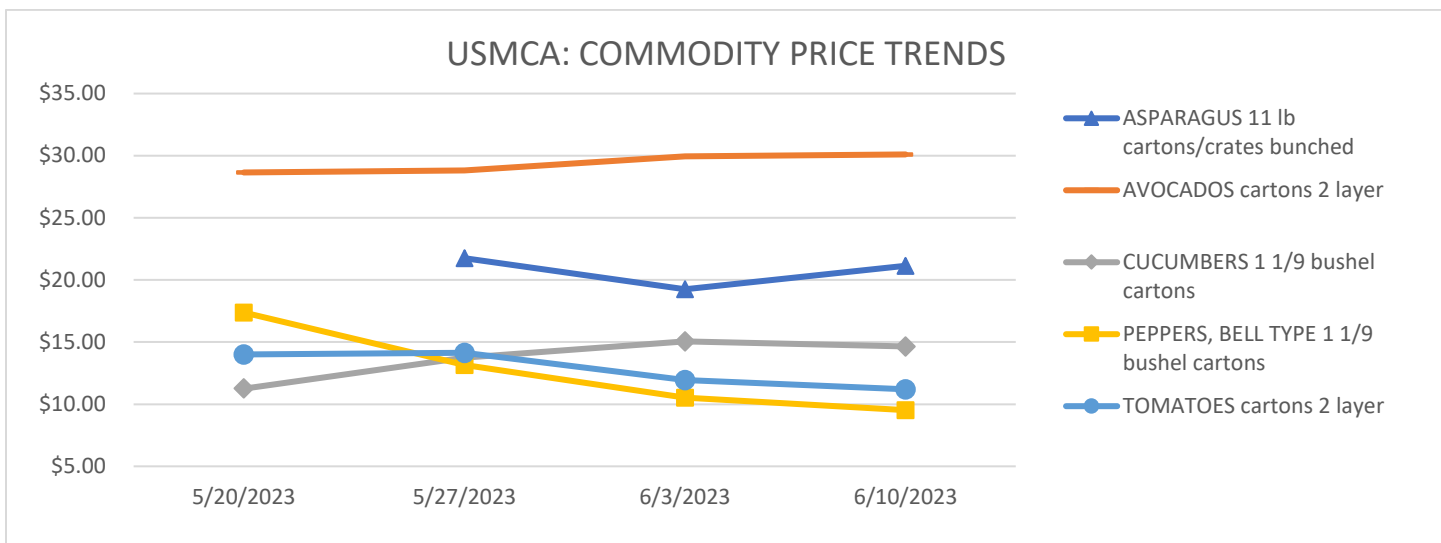
Movement of green bell peppers from Mexico crossings through Nogales, Arizona is expected to decrease seasonally. Trading early slow, late moderate. Prices generally unchanged. 1 1/9-bushel cartons green jumbo mostly 10.95, extra-large 8.95-10.95, large mostly 8.95, medium mostly 4.95-6.95 and irregular size fair quality 5.95-6.95. Quality variable. Movement of green bell peppers from Mexico crossings through Texas is expected about the same. Trading moderate. Prices extra-large slightly lower, others generally unchanged. 1 1/9-bushel cartons green extra-large mostly 10.95, large mostly 8.95-9.95 and medium mostly 6.95-7.95. Quality variable. Green bell peppers out of Coachella Valley California movement expected to increase seasonally. Trading fairly active. Prices slightly higher. 1 1/9-bushel cartons green jumbo mostly 15.95-17.95, extra-large mostly 16.95-18.95, large mostly 14.95-15.95 and irregular sized fair quality 10.95-12.95. Supplies are decreasing seasonally, prices are slightly higher. The transition has begun to new growing areas in the state. Quality variable.

Tomato movement from Mexico crossings through Texas is expected about the same. Trading moderate. Prices 5x5-5x6s lower, 5x5 size slightly lower, others generally unchanged. Cartons 2-layer vine ripens 4x4-4x5s mostly 13.95-14.95, 5x5s mostly 8.95-9.95, 5x6s mostly 7.95-8.95 and 25-pound cartons loose 4x4-4x5 sizes mostly 13.95-14.95, 5x5 size mostly 10.95-11.95 and 5x6 size 8.95-9.95. Quality generally good. Movement of tomatoes from Mexico crossings through Nogales, Arizona is expected to decrease seasonally. Trading moderate. Prices 4x4-4x5s slightly lower, others generally unchanged. Cartons 2-layer vine ripens 4x4-4x5s mostly 10.95, 5x5s mostly 8.95-9.95 and 5x6s mostly 6.95-7.95. Quality generally good. Tomato movement out of Florida West and South Carolina Districts is expected to remain about the same. Trading fairly active at lower prices. Prices lower. 25-pound cartons loose Mature Greens U.S. number one or better 5x6-6x6 sizes 14.95-17.00 and 6x7 size mostly 12.00-13.00. Supplies continue to increase. Tomato harvest was curtailed during the week due to wet fields. Demand is very good on 6x7 size and good on others. Prices are higher on 6x7 size and about steady on others. Extra services included. Quality generally good. Tomato movement out of Southeastern Arkansas has begun with very light shipments. Supplies are insufficient and in too few hands to establish a market. Expect sufficient volume and number of shippers for first F.O.B. report within 3-5 days. Very few sales were reported with demand being very good. Quality is expected to be generally good. Tomato movement from Mexico crossings through Otay Mesa is expected to increase seasonally. Supplies in too few hands to establish a market. Most present shipments from prior bookings and/or previous commitments. The first F.O.B. report is expected to be issued the week of June 18th. Quality is expected to be generally good. Tomato movement out of Central District California harvest is expected to begin the week of June 18th. The first F.O.B. report is expected to be issued the week of June 25th. Quality is expected to be generally good.

The following table provides a four-week price trend of the highest traded commodities this week.

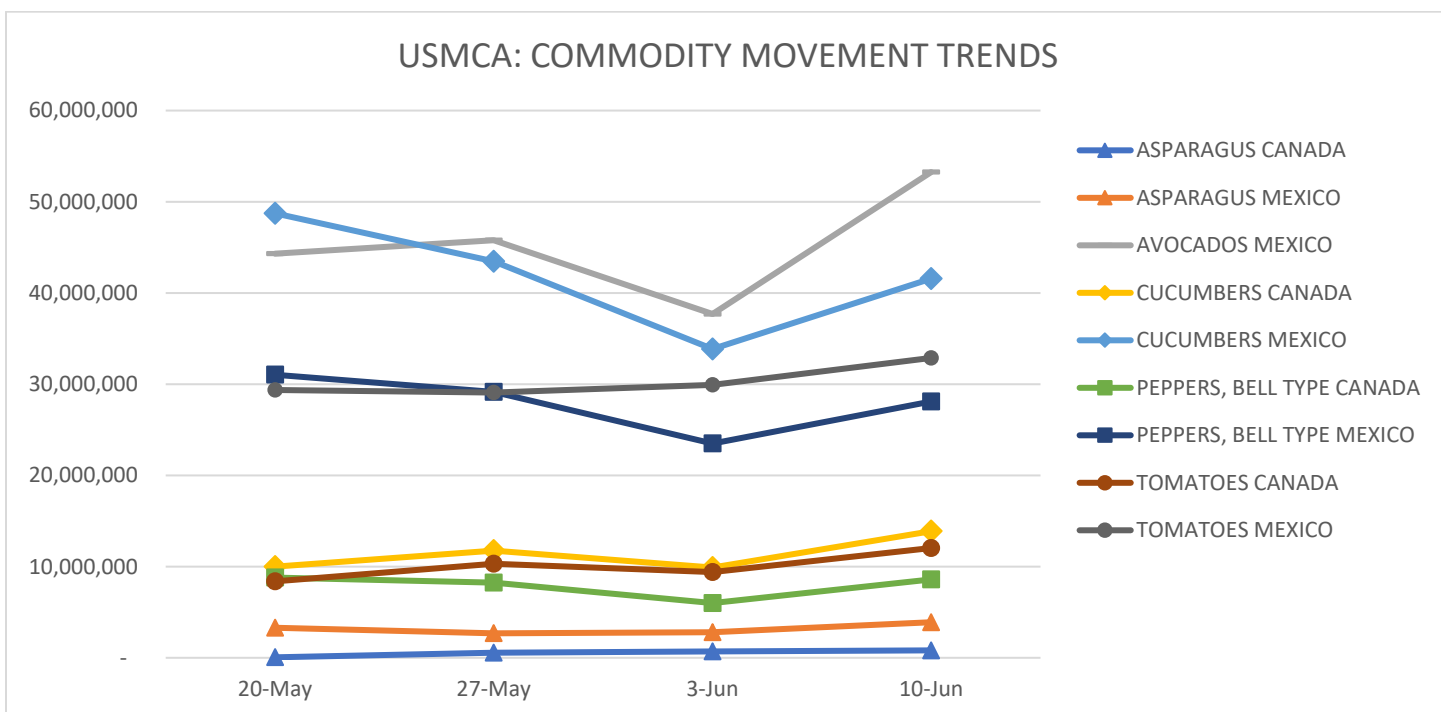
Four Week Price Trend in U.S. Dollars

Commodity	Package	5/20/2023	5/27/2023	6/3/2023	6/10/2023
ASPARAGUS	11 lb. cartons/crates bunched		\$ 21.75	\$ 19.25	\$ 21.15
AVOCADOS	cartons 2 layer	\$ 28.65	\$ 28.80	\$ 29.95	\$ 30.10
CUCUMBERS	1 1/9-bushel cartons	\$ 11.25	\$ 13.75	\$ 15.06	\$ 14.66
PEPPERS, BELL TYPE	1 1/9-bushel cartons	\$ 17.38	\$ 13.16	\$ 10.52	\$ 9.52
TOMATOES	cartons 2 layer	\$ 14.01	\$ 14.14	\$ 11.95	\$ 11.20

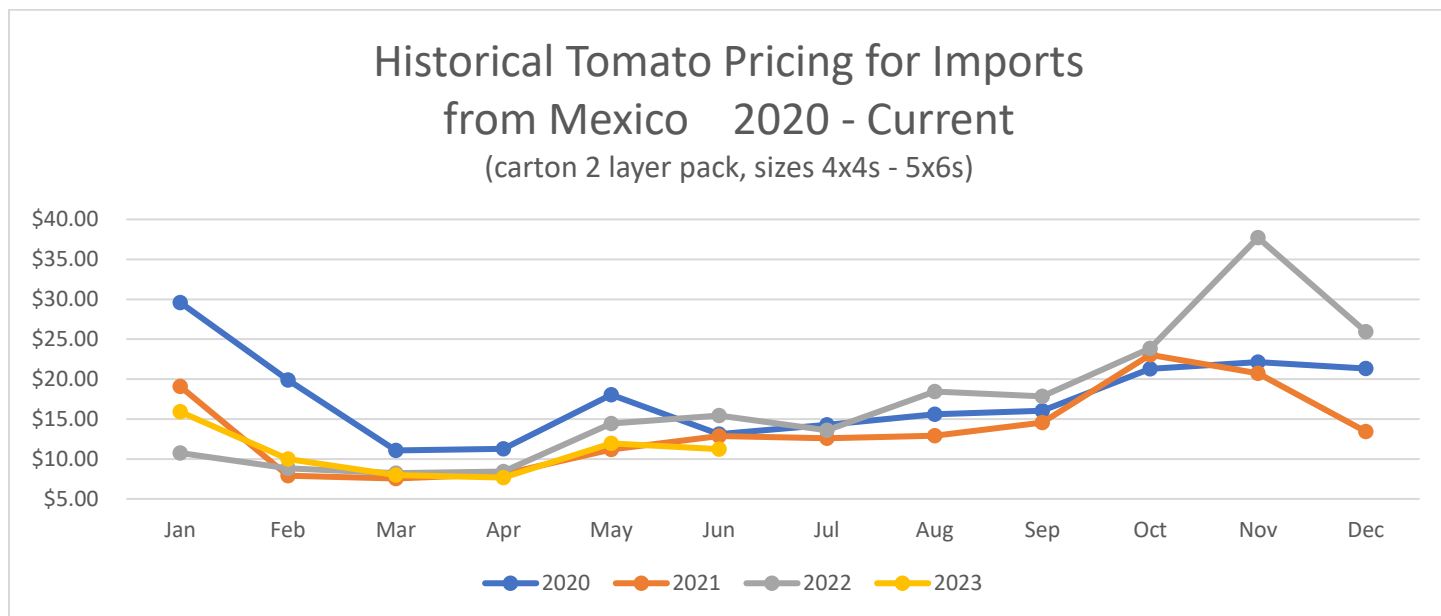


Four Week Movement in Pounds

COMMODITY	ORIGIN	20-May	27-May	3-Jun	10-Jun
ASPARAGUS	CANADA	53,771	543,392	689,182	813,315
	MEXICO	3,295,703	2,683,623	2,810,391	3,899,414
AVOCADOS	MEXICO	44,293,175	45,782,367	37,694,330	53,253,091
CUCUMBERS	CANADA	9,994,734	11,734,894	9,897,840	13,877,520
	MEXICO	48,730,928	43,473,464	33,860,367	41,582,579
PEPPERS, BELL TYPE	CANADA	8,794,708	8,248,768	6,001,573	8,591,295
	MEXICO	31,032,199	29,165,403	23,494,674	28,111,201
TOMATOES	CANADA	8,381,829	10,306,746	9,411,735	12,035,244
	MEXICO	29,371,050	29,080,472	29,925,833	32,878,074



The following chart, *Historical Tomato Pricing for Imports from Mexico*, is a four-year view of Mexican tomato prices at shipping point. Tomatoes are shown as they are the most consistently traded year-round. They have the highest volume of product moving between the U.S., Mexico, and Canada, along with a high level of market coverage of tomatoes by USDA Market News.



To be regarded as "seasonal and perishable," agricultural products must meet the following conditions: (1) the products are fresh or chilled products falling under the following HS2002 tariff codes: 0701, 0702, 0703, 0704, 0705, 0706, 0707, 0708, 0709, 0803, 0804, 0805, 0806, 0807, 0808, 0809, 0810; (2) the products are marketed in raw form for consumption without "further processing" ("further processing" refers to e.g. crushing, juicing, canning, or any other process that transforms the product from its raw form); and (3) the products normally are marketed within eight weeks after harvesting.

For information on the imported volume and prices of the remaining Seasonal and Perishable commodities listed below please visit: <https://www.marketnews.usda.gov/mnp/fv-home>

- Potatoes
- Tomatoes
- Onions, shallots, garlic, leeks, and other alliaceous vegetables
- Cabbages, cauliflower, kohlrabi, kale, and similar edible brassicas
- Lettuce (*Lactuca sativa*) and chicory (*Cichorium* spp.)
- Carrots, turnips, salad beets (salad beetroot), salsify, celeriac, radishes, and similar edible roots
- Cucumbers, including gherkins
- Leguminous vegetables, shelled or unshelled
- Other vegetables, fresh or chilled: asparagus, eggplants, celery, mushrooms and truffles, peppers (*Capsicum* or of the genus *Pimenta*), spinach, artichokes, olives, pumpkins, squash, and gourds
- Bananas and plantains
- Dates, figs, pineapples, avocados, guavas, mangoes, and mangosteens
- Citrus fruit
- Grapes
- Melons (including watermelons) and papayas (papaws)
- Apples, pears, and quinces
- Apricots, cherries, peaches (including nectarines), plums (including prune plums) and sloes
- Other fruit: strawberries, raspberries, blackberries, mulberries, loganberries, black, white, or red currants and gooseberries (other than kiwifruit), cranberries, blueberries, and other fruits of the genus *Vaccinium*, kiwifruit, durians, persimmons,
- Other berries; tamarinds