



Specialty Crops Market News Division U.S. Mexico Canada Agreement Seasonal Perishable Products Weekly Update

Agricultural Marketing Service

Issued Weekly

Friday, July 14, 2023

Update for Week of July 9-15, 2023

This report provides trend analysis of the volume and prices of Seasonal Perishable commodities. Volume represents current week and prices represent open (spot) market sales by first handlers on product of generally good quality and condition unless otherwise stated and may include promotional allowances or other incentives. The charts provide graphic representation of the volume and prices of the major commodities this week based on seasonal volume.

Summer has arrived with extremely high temperatures that are being felt from the West coast to the East coast. These record high temperatures are worrying farmers in the American Southwest and California's Central Valley that their crops might not survive this summer's heat waves. This past Sunday, temperatures climbed up to 114 degrees Fahrenheit in some parts of the Central Valley. These extreme weather conditions can also be a health hazard for farm workers when exposed for prolonged periods of time. An estimated 250 crops are grown in this region and are at risk with these extreme temperatures. Crops that are produced in hotter temperatures tend to have less proteins and vitamins. California's agriculture and farmers have experienced just about every weather event that exists, including extreme heat, drier conditions, wildfires and flooding. There are difficult challenges ahead for farmers facing these extreme weather conditions, but the ability to adapt gives the agricultural industry hope and optimism for the future.

Movement of asparagus from Peru imports through South Florida ports of entry is expected to increase slightly. Trading standard slow, others moderate. Prices large slightly higher and standard slightly lower. 11-pound cartons bunched green jumbo 36.95-38.85, large mostly 33.75-36.75, standard mostly 29.75-32.75 and small mostly 27.75-28.75. Most sales are prorated. Some product is experiencing shorter shelf life and it is prompting discounts. Prices on previous product was sloppy, but current spot market sales are higher and trending higher. It is reported that production is transitioning from the North to Southern Peru. Quality and condition variable but generally good. Movement of asparagus crossings from Mexico through Arizona, California and Texas is expected to increase. Trading moderate. Prices jumbo generally unchanged, others lower. 11-pound cartons/crates bunched green jumbo mostly 34.75-36.75, large mostly 34.75 and standard 30.75-32.75. Extra services included.

Movement of avocado crossings from Mexico through Texas is expected to increase slightly. Trading 60-84s fairly slow, others moderate. Prices lower. Cartons 2-layer Hass 32-48s mostly 56.25-58.25, 60s mostly 45.25-47.25, 70s mostly 34.25-36.25 and 84s mostly 25.25-27.25. Extra services included. Avocado movement out of South District California is expected to decrease slightly. Trading 60-84s fairly slow, others moderate. Prices lower. Cartons 2-layer Hass 32-36s 60.25-62.25, 40-48s mostly 59.25-61.25, 60s mostly 43.25-46.25, 70s 35.25-37.25 and 84s mostly 28.25-30.25. Extra services included. Movement of avocado from Peru imports through Philadelphia and New York City areas ports of entry is expected to increase seasonally. Trading fairly slow. Prices unchanged. Cartons 2-layer Hass 48s mostly 38.00, 60s mostly 32.00-34.00 and 70s mostly 28.00-30.00. Supplies and demand remain very light, and prices are steady.

Movement of cucumber from Mexico crossings through Texas is expected about the same. Trading early fairly active, late active. Prices much higher. 1 1/9-bushel cartons medium mostly 26.95-28.95, large mostly 22.95-24.95, fair quality mostly 20.95-22.95 and ordinary quality mostly 17.95-18.95. Most present shipments from prior bookings and/or previous commitments. Quality variable. Cucumber movement from Mexico crossings through Nogales, Arizona is expected to decrease seasonally. Trading early slow, late moderate. Prices medium higher, others much higher. 1 1/9-bushel cartons medium 16.95-19.95, large 14.95-16.95 and fair quality 12.95-14.95. Cartons 24s 7.95-8.95 and 36s 8.95-10.95. Quality variable. Cucumber movement from Mexico crossings through Otay Mesa is expected to increase seasonally. Trading moderate. Prices large higher, medium slightly lower, others generally unchanged. 1 1/9-bushel cartons medium mostly 16.95-18.95, large 16.95-17.95 and fair quality 16.95-17.95. Cartons 24s 8.00-8.95 and 36s 8.95-

For more information on:

- [Shipping Point Report Details](#)
- [Movement Report Details](#)
- [Generating Custom Reports](#)

For assistance please contact: jeff.main@usda.gov

[Custom Average Tool \(CAT\) Graphing tool and aggregated data source.](#)

10.95. Quality variable. Movement of cucumber out of South Georgia is expected to decrease sharply as most shippers are finished for the season. Supplies are insufficient and in too few hands to establish a market. Lighter supplies are expected to continue through the end of the week. The last F.O.B. report was issued this week. Quality generally good. Movement of cucumber out of Western North Carolina is expected to increase seasonally as the season gets underway. Trading moderate. Prices waxed 1 1/9-bushel cartons medium 18.00-20.35 and fair quality 10.00-12.35. Cartons 24s supplies in too few hands to establish a market. The first F.O.B. report was issued this week. Quality generally good.

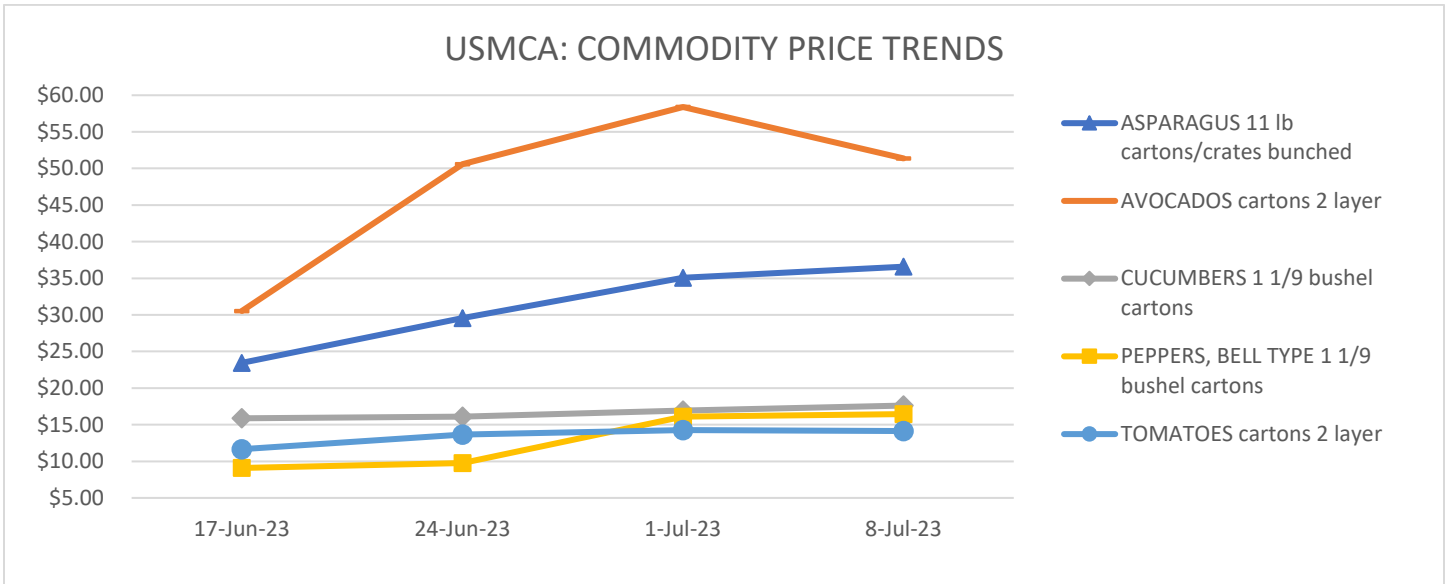
Movement of green bell peppers from Mexico crossings through Texas is expected to remain about the same. Trading moderate. Prices generally unchanged. 1 1/9-bushel cartons green extra-large mostly 17.95-18.95, large mostly 15.95-16.95 and medium mostly 13.95-14.95. Quality variable. Movement of green bell peppers out of San Joaquin Valley California is expected to increase seasonally. Trading fairly active at much lower prices. Prices much lower. 1 1/9-bushel cartons green extra-large mostly 14.95-16.95, large mostly 13.95-14.95 and irregular sized fair quality 10.95-11.95. Prices are expected to go up slightly higher. Demand has increase in the last few days. Quality generally good. Green bell peppers out of Coachella Valley California movement are expected to decrease sharply as most shippers are finished for the season. Supplies are insufficient and in too few hands to establish a market. Lighter shipments are expected to continue through July 22nd. The last F.O.B. report was issued this week. Quality variable. Green bell peppers out of Eastern North Carolina movement are expected to remain about the same. Trading fairly slow. Prices lower. 1 1/9-bushel cartons green jumbo and large 14.35-16.35, irregular sized fair quality 12.35. Green bell peppers out of Western North Carolina movement are expected to increase seasonally as the season gets underway. Trading moderate. Prices 1 1/9-bushel cartons green jumbo and extra-large 16.00-16.35, and irregular sized fair quality 12.00-14.35. The first F.O.B. report was issued this week. Quality generally good.

Tomato movement from Mexico crossings through Texas is expected to remain about the same. Trading early fairly active, late moderate. Prices 4x4-4x5s and 4x4-5x5 sizes lower, others slightly lower. Cartons 2-layer vine ripers 4x4-4x5s mostly 11.95-12.95, 5x5s mostly 9.95-10.95, 5x6s mostly 8.95 and 25-pound cartons loose 4x4-4x5 sizes mostly 12.95-13.95, 5x5 size mostly 10.95-11.95 and 5x6 size 9.95-10.95. Quality generally good. Tomato movement from Mexico crossings through Otay Mesa is expected about the same. Trading moderate. Prices generally unchanged. Cartons 2-layer vine ripers 4x4-4x5s 14.95-17.95 and 5x5-5x6s 15.00-16.95. Quality generally good. Tomato movement out of Southeastern Arkansas is expected to decrease seasonally. Trading active. Prices generally unchanged. Cartons 2-layer vine ripers 4x4s and 5x5s mostly 16.00-17.00. 25-pound cartons loose vine ripers 5x6 and 6x6 sizes mostly 16.00-17.00. Extra services included. Quality generally good. Tomato movement out of Central District California is expected to increase seasonally. Trading moderate. Prices much lower. 25-pound cartons loose Mature Greens jumbo, extra-large and large mostly 12.00-12.95 and medium 8.00-8.95. Quality generally good. Tomato movement out of Alabama is expected to increase seasonally. Trading moderate. Prices 25-pound cartons loose Mature Greens 85 percent U.S. one or better 5x6 size. Vine ripers jumbo and extra-large 16.00-17.00. Supplies are expected to increase as more growers begin the harvesting season. Demand increase to good later in the week with prices about steady. Extra services included. Quality generally good. Tomato movement out of Eastern Tennessee and Virginia Eastern Shore is expected to start with light supplies as the season gets fully underway. Trading moderate. Prices 25-pound cartons loose Mature Greens 85 percent U.S. one or better 5x6 size 16.00-17.00, 6x6 size 16.00-16.95 and 6x7 size 12.00-14.95. Supplies are expected to increase as more growers begin the harvesting season. Demand increase to good later in the week with prices about steady. Extra services included. Quality generally good.

The following table provides a four-week price trend of the highest traded commodities this week.

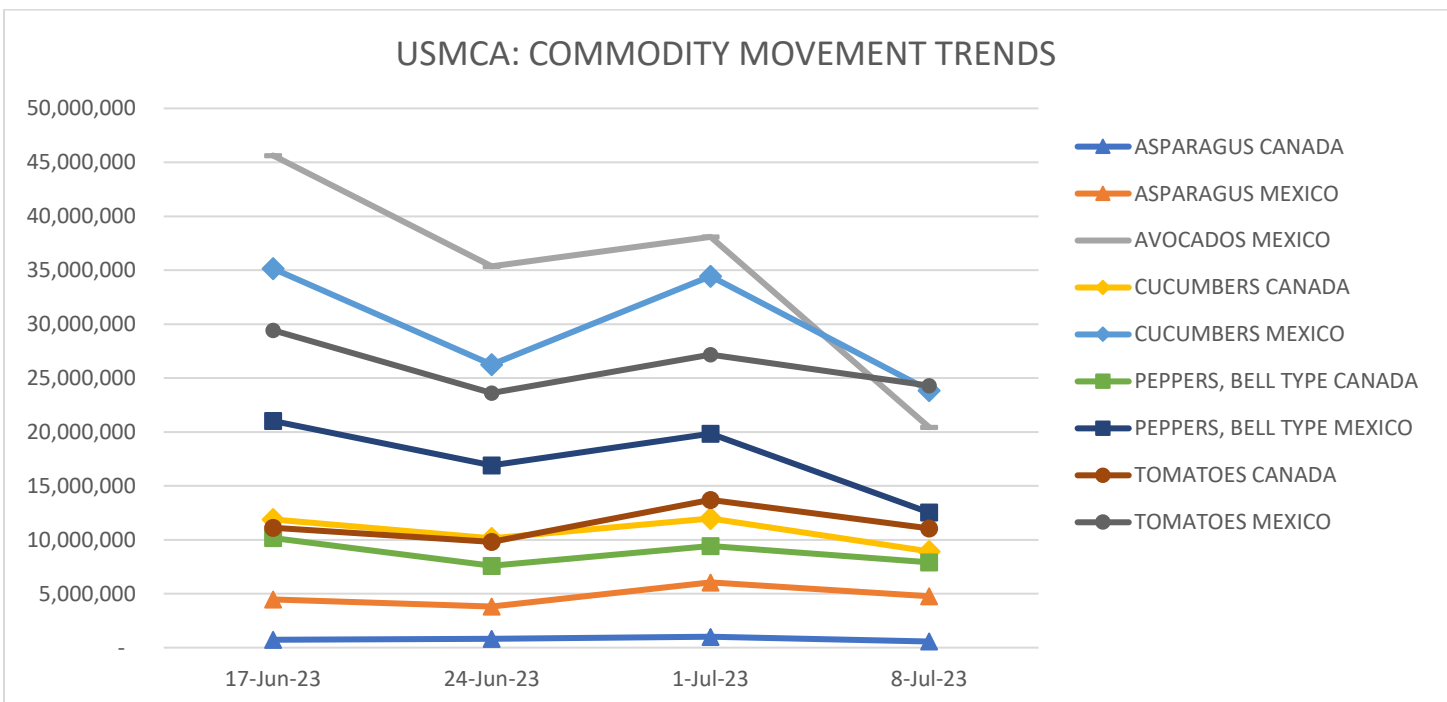
Four Week Price Trend in U.S. Dollars

Commodity	Package	17-Jun-23	24-Jun-23	1-Jul-23	8-Jul-23
ASPARAGUS	11 lb. cartons/crates bunched	\$ 23.45	\$ 29.58	\$ 35.08	\$ 36.58
AVOCADOS	cartons 2 layer	\$ 30.54	\$ 50.61	\$ 58.39	\$ 51.39
CUCUMBERS	1 1/9-bushel cartons	\$ 15.88	\$ 16.12	\$ 16.95	\$ 17.62
PEPPERS, BELL TYPE	1 1/9-bushel cartons	\$ 9.09	\$ 9.78	\$ 16.12	\$ 16.45
TOMATOES	cartons 2 layer	\$ 11.66	\$ 13.64	\$ 14.27	\$ 14.14

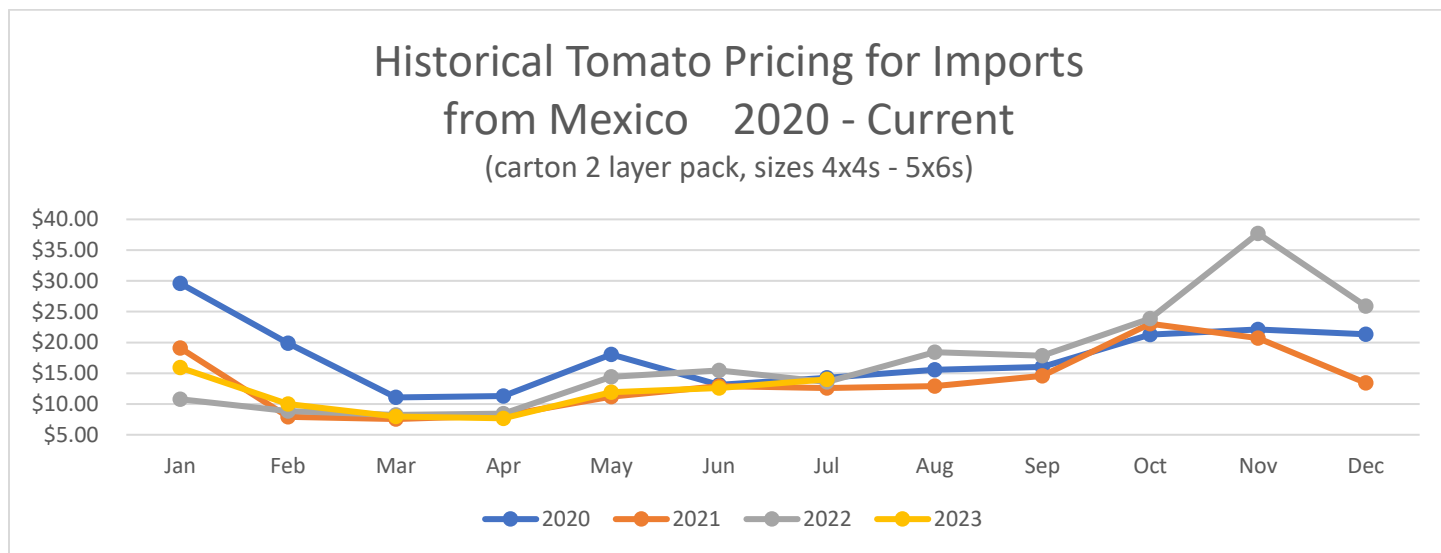


Four Week Movement in Pounds

COMMODITY	ORIGIN	17-Jun-23	24-Jun-23	1-Jul-23	8-Jul-23
ASPARAGUS	CANADA	743,985	828,501	1,012,583	568,322
	MEXICO	4,467,732	3,811,520	6,049,645	4,763,977
AVOCADOS	MEXICO	45,637,107	35,372,612	38,088,668	20,436,802
CUCUMBERS	CANADA	11,882,689	10,142,481	11,977,890	8,921,045
	MEXICO	35,139,581	26,253,884	34,442,251	23,854,400
PEPPERS, BELL TYPE	CANADA	10,164,049	7,594,678	9,423,348	7,925,843
	MEXICO	21,015,690	16,894,460	19,844,950	12,532,870
TOMATOES	CANADA	11,116,228	9,806,576	13,700,966	11,069,948
	MEXICO	29,428,179	23,610,680	27,173,353	24,276,617



The following chart, *Historical Tomato Pricing for Imports from Mexico*, is a four-year view of Mexican tomato prices at shipping point. Tomatoes are shown as they are the most consistently traded year-round. They have the highest volume of product moving between the U.S., Mexico, and Canada, along with a high level of market coverage of tomatoes by USDA Market News.



To be regarded as "seasonal and perishable," agricultural products must meet the following conditions: (1) the products are fresh or chilled products falling under the following HS2002 tariff codes: 0701, 0702, 0703, 0704, 0705, 0706, 0707, 0708, 0709, 0803, 0804, 0805, 0806, 0807, 0808, 0809, 0810; (2) the products are marketed in raw form for consumption without "further processing" ("further processing" refers to e.g. crushing, juicing, canning, or any other process that transforms the product from its raw form); and (3) the products normally are marketed within eight weeks after harvesting.

For information on the imported volume and prices of the remaining Seasonal and Perishable commodities listed below please visit: <https://www.marketnews.usda.gov/mnp/fv-home>

- Potatoes
- Tomatoes
- Onions, shallots, garlic, leeks, and other alliaceous vegetables
- Cabbages, cauliflower, kohlrabi, kale, and similar edible brassicas
- Lettuce (*Lactuca sativa*) and chicory (*Cichorium* spp.)
- Carrots, turnips, salad beets (salad beetroot), salsify, celeriac, radishes, and similar edible roots
- Cucumbers, including gherkins
- Leguminous vegetables, shelled or unshelled
- Other vegetables, fresh or chilled: asparagus, eggplants, celery, mushrooms and truffles, peppers (*Capsicum* or of the genus *Pimenta*), spinach, artichokes, olives, pumpkins, squash, and gourds
- Bananas and plantains
- Dates, figs, pineapples, avocados, guavas, mangoes, and mangosteens
- Citrus fruit
- Grapes
- Melons (including watermelons) and papayas (papaws)
- Apples, pears, and quinces
- Apricots, cherries, peaches (including nectarines), plums (including prune plums) and sloes
- Other fruit: strawberries, raspberries, blackberries, mulberries, loganberries, black, white, or red currants and gooseberries (other than kiwifruit), cranberries, blueberries, and other fruits of the genus *Vaccinium*, kiwifruit, durians, persimmons,
- Other berries; tamarinds