



Specialty Crops Market News Division U.S. Mexico Canada Agreement Seasonal Perishable Products Weekly Update

Agricultural Marketing Service

Issued Weekly

Friday, June 21, 2024

Update for Week June 16-22, 2024

This report provides trend analysis of the volume and prices of Seasonal Perishable commodities. Volume represents current week, and prices represent open (spot) market sales by first handlers on product of generally good quality and condition unless otherwise stated and may include promotional allowances or other incentives. The charts provide graphic representation of the volume and prices of the major commodities this week based on seasonal volume.

President Biden issues construction and expansion permits for three South Texas bridges connected to Mexico. Border Report, by Sandra Sanchez on June 6, 2024, reported that the bridge projects will facilitate the movement of goods and strengthen United States-Mexico supply chains with expectation to lower prices for American consumers. The World Trade bridge in Laredo, Texas is considered the number one port of entry for goods along the U.S. Mexico border, connected to Nuevo Laredo, Mexico. The expansion will provide 10 lanes dedicated to commercial truck traffic easing congestion and reducing wait times. Puerto Verde Global Trade Bridge in Eagle Pass, Texas will be the third vehicular bridge connected to Piedras Negras, Mexico and the new Flor de Mayor Bridge in Brownsville, Texas will add a fourth vehicular bridge connected to Matamoros, Mexico.

Agricultural Weather Highlights, provided by Eric Luebehusen, Agricultural Meteorologist, USDA/OCE/WAOB June 20, 2024: In the West and into the Plains of Nebraska and Texas, dry and hot weather replaced the recent cooler conditions as seasonal fieldwork continues without delay. The heat wave continues through the Middle Mississippi Valley into the Ohio and Tennessee River Valley where highs in the mid-90s continues to exacerbate soil moisture losses. In the South, Tropical Storm Alberto moved ashore in northeastern Mexico with deep tropical moisture, triggering heavy showers in southern Texas. Dry weather conditions promoted fieldwork and increased drought concerns from the Carolinas into the northern Delta region.

Avocado movement of Mexico crossings through Texas is expected to decrease sharply as USDA suspends inspections of avocados and mangos from Michoacan due to an inspection of security concerns. Trading of avocados early was slow, late is active. Prices are higher. Cartons 2 layers Hass 32-48s are mostly 60.25-63.25, 60s are mostly 58.25-60.25, 70s are mostly 47.28-48.25, 84s are mostly 40.25-42.25; organic 48s are mostly 67.25-68.25, 60s are mostly 63.25-65.25, 70s are mostly 48.25-50.25. Extra services are included. Many sales are booked at previously committed prices. Prices represent few spot market sales. Movement from South District California is expected to remain about the same. Trading early was active, late is moderate. Prices are higher. Cartons 2 layers Hass 32-48s are mostly 63.25-65.25, 60s are mostly 56.25-59.25, 70s are mostly 47.25-48.25, 84s are mostly 40.25-42.25; organic 48s are mostly 66.25-68.25, 60s are mostly 60.25-63.25, 70s are mostly 50.25-52.25. Extra services are included. Movement from South Florida district is expected to increase as the season progresses. Supplies are light. Unofficial prices from trade sources of Donnie variety 2-layer cartons 14-26s are 36.50-39.00. Very light imports from Peru arrived through Philadelphia and New York City areas port of entries. The first F.O.B. report is expected to be issued within the next two weeks.

Cucumber movement from Mexico crossings through Texas is expected about the same. Trading early was moderate, late is fairly slow. Prices are slightly lower. 1 1/9-bushel cartons medium are mostly 14.95-15.95, fair quality are mostly 7.95-9.95, ordinary quality are mostly 4.95-6.95, large are mostly 16.95-18.95. Quality and condition are variable. Movement from Mexico crossings through Otay Mesa, California is expected about the same. Trading is fairly active. Prices of 1 1/9-bushel cartons medium are mostly 20.00, fair quality are mostly 16.00-17.00; cartons 36s are mostly 11.00-12.00. Quality is generally good. Movement from South Georgia is expected to remain about the same. Trading is moderate. Prices are

For more information on:

- [Shipping Point Report Details](#)
- [Movement Report Details](#)
- [Generating Custom Reports](#)

For assistance please contact: jeff.main@usda.gov

[Custom Average Tool \(CAT\) Graphing tool and aggregated data source.](#)

lower. 1 1/9-bushel cartons medium are 8.35-10.85, fair quality are 6.35-8.85; cartons 24s are 3.35-4.85. Movement from Eastern North Carolina is expected to decrease. Supplies are in too few hands to establish a market.

Green Bell Pepper movement from Imperial and Coachella Valleys, California is expected to increase seasonally. Supplies are very light and in few hands. Trading is very active. 1 1/9-bushel cartons Green are insufficient and in too few hands to establish a market. Quality is generally good. Movement from South Georgia is expected to remain about the same. Trading is moderate. Prices are generally unchanged. 1 1/9-bushel cartons jumbo are 28.35-30.85, large are 26.35-26.85, large fair quality are 22.35-24.85. Quality is generally good. Movement from Eastern North Carolina is expected to increase as shippers begin harvest. Current supplies are very light and in too few hands to establish a market. The first F.O.I.B. report is expected to be issued by June 21.

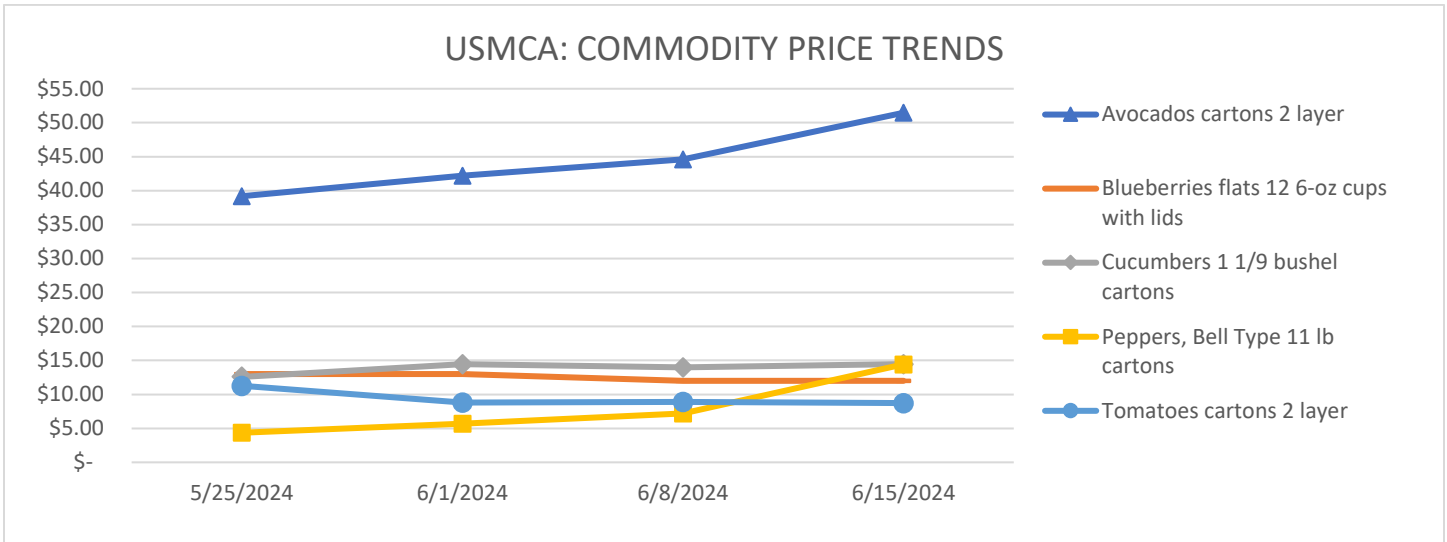
Tomato movement from Florida West and South Carolina District is expected to increase. Trading 6x6 size is active, other are fairly active. Prices are higher. Extra services are included. 25-pound cartons loose 5x6 size are 13.00-14.00, 6x6 size are mostly 14.00-14.50, 6x7 size are mostly 14.00. Quality generally good. Movement from Mexico crossings through Texas is expected about the same. Trading early was moderate, late is fairly slow. Prices are slightly Lower. Vine Ripes cartons 2-layer 4x4-4x5s are mostly 8.95, 5x5-5x6s are 7.95-8.95; 25-pound cartons loose 4x4-5x6 sizes are 8.30-8.95. Quality is generally good. Movement from Mexico crossings through Nogales, Arizona is expected to decrease sharply as most shippers are finished for the season. Trading early was slow, late is moderate. Prices are higher. Cartons 2-layer Vine Ripes 5x5-5x6s are 7.95-8.95. Quality is generally good. Movement from Mexico crossings through Ota Mesa, California is expected about the same. Supplies are fairly light. Trading early was moderate, late is fairly active. Prices of 4x4s are higher, others are slightly higher. Cartons 2-layer Vine Ripes 4x4s are mostly 11.00-12.00, 4x5-5x6s are mostly 10.00-11.00. Quality is generally good. Movement from Central District, California is expected to increase seasonally. Current supplies are insufficient and in too few hands to establish a market. Light harvest is now underway. Quality is generally good. The first F.O.B. report is expected to be issued the week of June 16. Movement of Southeastern Arkansas tomatoes began and is expected increase seasonally. The first F.O.B. report is expected to be issued by June 21.

Blueberry movement from Eastern North Carolina is expected to decrease slightly. Trading is moderate. Prices are unchanged. Flats 12 1-pint cups with lids medium-large are mostly 14.00-16.00. Movement expected to begin seasonal decrease. Trading is moderate. Prices of organic are higher, conventional is slightly higher. Flats 12 1-pint cups with lids are mostly 17.00-19.00, 12 6-ounce cups with lids are mostly 11.00- 13.00. Cartons 8 18-ounce containers with lids are 18.00-22.00; ORGANIC flats 12 1-pint cups with lids are mostly 20.00-32.00, 6-ounce cups with lids are mostly 20.00-22.00. Quality is generally good. Most present shipments are from prior bookings and/or previous commitments. Movement from south Georgis is expected to decrease seasonally. Remaining supplies are in too few hands to establish a market. Movement from Mexico crossings though Arizona, California and Texas is expected to decrease seasonally. Trading is moderate. Prices are slightly lower. Flats 12 6-ounce cups with lids are mostly 10.00-12.00. Quality is variable. Most present shipments are from prior bookings and/or previous commitments. Harvest of British Columbia, Canada crossings through Northwest Washington is expected to begin in earliest areas by week ending of July 6, but remain very light until the week of Jul 15, when additional areas begin. The first F.O.B. report is expected to be issued by July 19. Quality and condition are expected to be generally good. Harvest of Oregon and Washington is expected to begin in earliest areas by week ending of June 22, and remain very light until additional areas the week of June 30. The first F.O.B. report is expected to be issued by July 5. Quality and condition are expected to be generally good.

The following table provides a four-week price trend of the highest traded commodities this week.

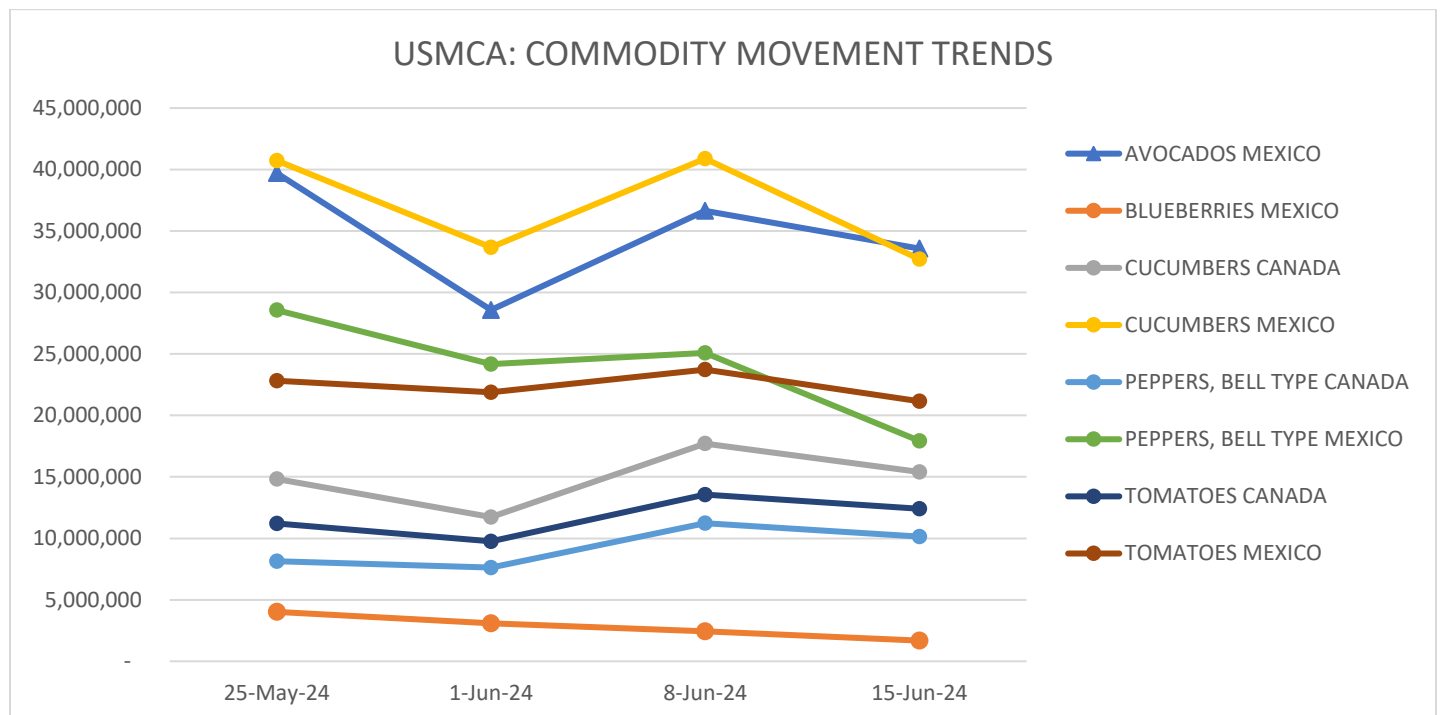
Four-Week Price Trend in U.S. Dollars

commodity	package	5/25/2024	6/1/2024	6/8/2024	6/15/2024
Avocados	cartons 2 layer	\$ 39.18	\$ 42.18	\$ 44.61	\$ 51.46
Blueberries	flats 12 6-oz cups with lids	\$ 13.00	\$ 13.00	\$ 12.00	\$ 12.00
Cucumbers	1 1/9-bushel cartons	\$ 12.58	\$ 14.46	\$ 14.00	\$ 14.47
Peppers, Bell Type	11 lb. cartons	\$ 4.36	\$ 5.71	\$ 7.21	\$ 14.43
Tomatoes	cartons 2 layer	\$ 11.27	\$ 8.81	\$ 8.89	\$ 8.73

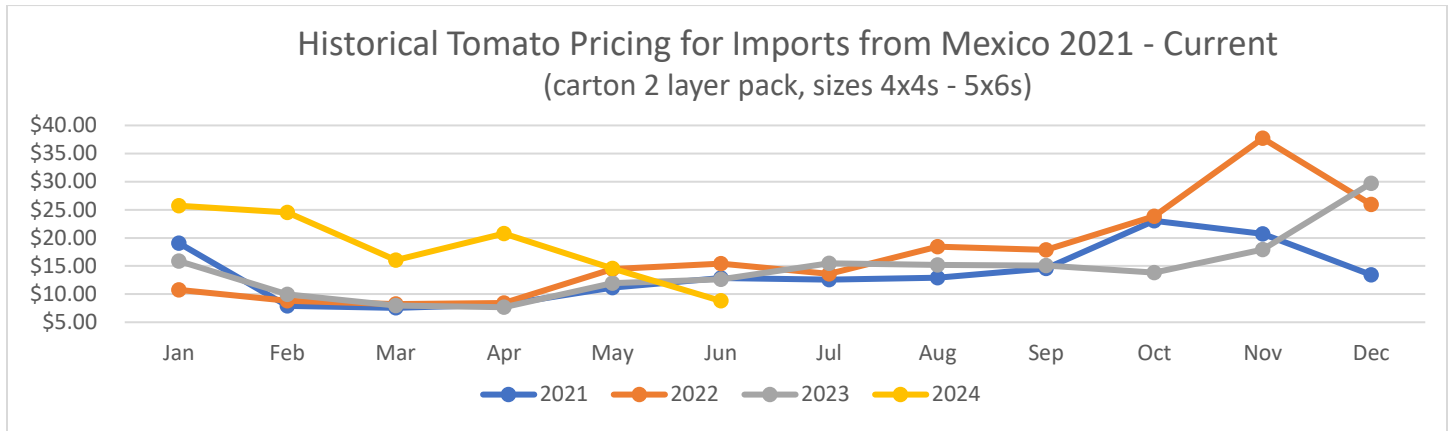


Four-Week Movement in Pounds

COMMODITY	ORIGIN	25-May-24	1-Jun-24	8-Jun-24	15-Jun-24
AVOCADOS	MEXICO	39,701,187	28,578,533	36,643,823	33,572,969
BLUEBERRIES	MEXICO	4,017,564	3,083,626	2,452,041	1,683,953
CUCUMBERS	CANADA	14,826,944	11,733,450	17,705,978	15,413,395
	MEXICO	40,735,226	33,666,479	40,886,837	32,713,800
PEPPERS, BELL TYPE	CANADA	8,127,829	7,625,874	11,232,648	10,152,828
	MEXICO	28,561,072	24,164,827	25,092,110	17,931,583
TOMATOES	CANADA	11,208,964	9,759,116	13,560,622	12,402,532
	MEXICO	22,820,926	21,880,675	23,726,008	21,152,850



The following chart, *Historical Tomato Pricing for Imports from Mexico*, is a four-year view of Mexican tomato prices at shipping point. Tomatoes are shown as they are the most consistently traded year-round. They have the highest volume of product moving between the U.S., Mexico, and Canada, along with a high level of market coverage of tomatoes by USDA Market News.



To be regarded as "seasonal and perishable," agricultural products must meet the following conditions: (1) the products are fresh or chilled products falling under the following HS2002 tariff codes: 0701, 0702, 0703, 0704, 0705, 0706, 0707, 0708, 0709, 0803, 0804, 0805, 0806, 0807, 0808, 0809, 0810; (2) the products are marketed in raw form for consumption without "further processing" ("further processing" refers to e.g. crushing, juicing, canning, or any other process that transforms the product from its raw form); and (3) the products normally are marketed within eight weeks after harvesting.

For information on the remaining Seasonal and Perishable commodities listed below please visit:

- Movement <https://www.marketnews.usda.gov/mnp/fv-home>
- Prices [Home | MMN \(usda.gov\)](https://www.marketnews.usda.gov/mnp/fv-home)

- Potatoes
- Tomatoes
- Onions, shallots, garlic, leeks, and other alliaceous vegetables
- Cabbages, cauliflower, kohlrabi, kale, and similar edible brassicas
- Lettuce (*Lactuca sativa*) and chicory (*Cichorium* spp.)
- Carrots, turnips, salad beets (salad beetroot), salsify, celeriac, radishes, and similar edible roots
- Cucumbers, including gherkins
- Leguminous vegetables, shelled or unshelled
- Other vegetables, fresh or chilled: asparagus, eggplants, celery, mushrooms and truffles, peppers (*Capsicum* or of the genus *Pimenta*), spinach, artichokes, olives, pumpkins, squash, and gourds
- Bananas and plantains
- Dates, figs, pineapples, avocados, guavas, mangoes, and mangosteens
- Citrus fruit
- Grapes
- Melons (including watermelons) and papayas (papaws)
- Apples, pears, and quinces
- Apricots, cherries, peaches (including nectarines), plums (including prune plums) and sloes
- Other fruit: strawberries, raspberries, blackberries, mulberries, loganberries, black, white, or red currants and gooseberries (other than kiwifruit), cranberries, blueberries, and other fruits of the genus *Vaccinium*, kiwifruit, durians, persimmons,
- Other berries; tamarinds