



Specialty Crops Market News Division

U.S. Mexico Canada Agreement

Seasonal Perishable Products Weekly Update

Agricultural Marketing Service

Issued Weekly

Friday, July 12, 2024

Update for July 7-13, 2024

This report provides trend analysis of the volume and prices of Seasonal Perishable commodities. Volume represents current week, and prices represent open (spot) market sales by first handlers on product of generally good quality and condition unless otherwise stated and may include promotional allowances or other incentives. The charts provide graphic representation of the volume and prices of the major commodities this week based on seasonal volume.

Hurricane Beryl Impacts Commercial Shipping: From an article by Noi Mahoney with FreightWaves, dated July 9, Ports of Houston, Galveston, Freeport, and the Freeport Harbor Channel in Texas were closed on July 8 and 9 due to the impact of category 1 Hurricane Beryl. All ports opened by Wednesday, with some container terminal facilities extending gate hours. Beryl also shut down railway operations near Houston as tracks are not expected to be fully functional until they are inspected, repaired, and deemed safe. Trucking operations in much of south Texas also closed as facilities, as well as homes, were without power from July 8-11. The hurricane's torrential rains left behind flooding, and over 90 mile an hour winds that knocked out power to over 1.3 million homes and business across southeast Texas. Crippling heat has also added to the extremely difficult situation with daytime high temperatures reaching 97 degrees Fahrenheit, and overnight lows between 75-79 degrees Fahrenheit.

Agricultural Weather Highlights, provided by Brad Rippey, Agricultural Meteorologist, USDA/OCE/WAOB July 11, 2024: In Texas, approximately 1.3 million electrical customers remain without power, 3 days after Hurricane Beryl's arrival. Scattered showers are expected to continue near the Texas coast. Heavy rain from Hurricane Beryl dropped 2 to 4 inches of rain from south-central Missouri into southern Michigan, with fields benefitting from the moisture, despite local flooding. In the South, rain fell across parts of Florida with a few showers near the mid-Atlantic Coast. Despite recent showers, the Southeast drought left summer crops in need of additional moisture. On the Plains, hot and dry conditions, where temperature reached 103°F in areas such as Montana, were ideal for grain maturation, harvest, and hastened development of small grains. In the West, a hot spell lasted over a week with all-time records in California cities like Palm Springs at 124°F, Redding at 119°F, and Las Vegas, Nevada at 120°F.

Avocado markets continue to weaken in both demand and price for Mexico product as volume increases. Packing house in Mexico are now fully operational. The size curve currently is heavy towards 32-48s. Shippers anticipate the size curve to shift in the next couple of weeks as the old crop transitions into new crop. New crop supplies are expected to be heavy toward 70-84s. Current trading of conventional 70-84s and organic are moderate, others are slow. Prices are lower. Cartons 2-layers Hass 32-36s are mostly 55.25-58.25, 40-48s are mostly 55.25-57.25, 60s are mostly 53.25-55.25, 70s are mostly 48.25-50.25, and 84s are mostly 43.25-45.25; organic 48s are mostly 72.25-75.25, 60s are mostly 65.25-68.25, and 70s are mostly 56.25-59.25. Extra services are included. There continues to be a wide range in price. Movement from South District California is expected to remain about the same. Trading early was fairly active, late is moderate. Prices are lower. Cartons 2-layers Hass 32-36s are mostly 60.25-62.25, 40-48s are mostly 58.25-60.25, 60s are mostly 54.25-57.25, 70s are mostly 48.25-50.25, 84s are mostly 44.25-47.25; ORGANIC 48s are mostly 72.25-75.25, 60s are mostly 66.25-68.25, 70s are mostly 56.25-58.25. Extra services are included. There continues to be a wide range in price. Movement from South Florida district is expected to increase. Trading is moderate. 2-layer cartons, mostly Donnie with some Hardy varieties, 14-18s are mostly 30.00, 20-24s are mostly 30.00-35.00. Light imports from Peru through Philadelphia and New York area ports of entry continued. The first F.O.B. report is expected to be issued by the end of July.

Cucumber crossings from Mexico through Otay Mesa, California are higher this week as buyers are looking to replenish supplies after the long 4th of July weekend. Prices are expected to fall as some shippers from Nogales are now operating and shipping through Otay Mesa. Movement from Mexico crossings through Otay Mesa, California is expected to increase. Trading early was fairly slow, late is active. Prices are higher. 1 1/9-bushel cartons medium and large are mostly 18.95-20.95, fair quality are mostly 16.95-17.95. Cartons 36s are mostly 10.95-11.95. Quality is generally good. Movement from Mexico crossings through Texas is expected about the same. Trading is moderate. Prices of large are

For more information on:

- [Shipping Point Report Details](#)
- [Movement Report Details](#)
- [Generating Custom Reports](#)

For assistance please contact: jeff.main@usda.gov

[Custom Average Tool \(CAT\) Graphing tool and aggregated data source.](#)

slightly lower, others are generally unchanged. 1 1/9-bushel cartons medium are mostly 18.95-20.95, fair quality are mostly 14.95-15.95, ordinary quality are mostly 9.95-11.95, large are mostly 16.95-18.95. Quality and condition are variable. Movement from South Georgia is expected to decrease as the season comes to an end. Trading is moderate. 1 1/9-bushel cartons offerings are insufficient to quote.

Green Bell Pepper movement from San Joaquin Valley, California is expected to increase seasonally. Trading early was fairly active, late is moderate. Prices are slightly lower. 1 1/9-bushel cartons extra-large are 26.95-28.95, large are mostly 25.95-26.95, irregular sized fair quality are 19.95-21.95. Quality is generally good. Supplies from Eastern North Carolina is in too few hands to establish a market due to severe hot and dry weather affecting production. Movement from South Georgia is expected to decrease as season comes to an end. Trading is moderate. 1 1/9-bushel cartons offerings are insufficient to quote.

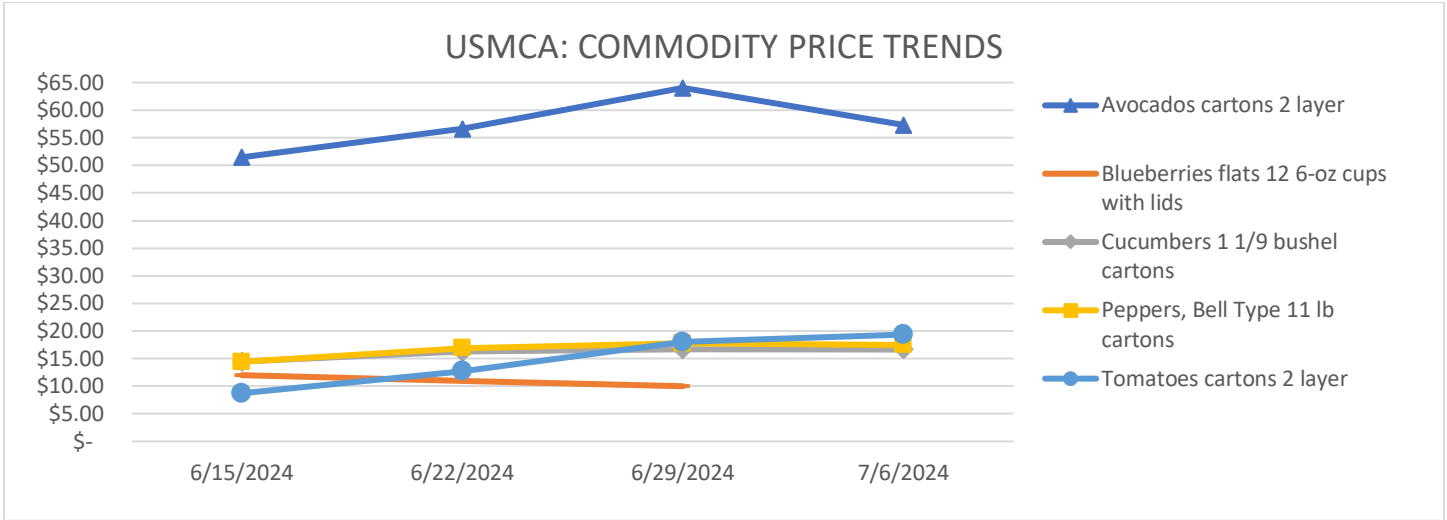
Tomatoes from Central District California are priced lower this week, to stay competitive with Mexico supplies arriving through Otay Mesa port of entry. Supplies are increasing day by day as the heat continues in Central and Northern California, pushing ahead crop progress. Movement from Central District California is expected to increase. Trading of extra-large are active, others are moderate. Prices of extra-large and large are generally unchanged, medium are slightly lower. 25-pound cartons of loose Mature Greens extra-large and large are mostly 14.00-15.00, medium are mostly 10.00-11.00. Quality is generally good. Movement from Mexico crossings through Texas is expected to decrease. Trading is moderate. Prices are slightly higher. Vine Ripes cartons 2-layer 4x4-4x5s are mostly 20.95-21.95, 5x5-5x6s are 19.95-20.95; 25-pound cartons loose 4x4-4x5 sizes are mostly 20.95-21.95, 5x5-5x6 sizes are 19.95-20.95. Quality is generally good. Movement of Mexico crossings through Otay Mesa, California is expected to increase as production increases in Baja California. More product is available this week and is expected to increase to be even more plentiful. Trading early was fairly active, late is moderate. Prices of 4x4-4x5s are generally unchanged, 5x5-5x6s are slightly lower. Cartons 2-layer Vine Ripes 4x4-4x5s are mostly 18.00-19.00, 5x5- 5x6s are mostly 17.00-18.00. Quality is generally good. Movement from Eastern Tennessee and Virginia Eastern Shore is expected to increase as more growers start the season. Trading is active. 25-pounds carton of loose, 85 percent U.S. One or Better, 5x6 size are 18.95-19.00, 6x6 size are 18.95-19.00, 6x7 size are 14.95-15.00. Quality is generally good. Extra services are included. Movements from Alabama is expected to increase as more growers start the season. The first F.O.B. report is expected to be issued by July 16. Most shippers from Southeastern Arkansas are finished for the season. Supplies are insufficient and in too few hands to establish a market.

Blueberries from the Pacific Northwest faced unseasonable hot temperatures affecting Washington and Oregon quality, condition, and yields. Movement is expected to slightly increase. Trading is active. Prices are generally unchanged. Flats 12 1-pint cups with lids medium-large are mostly 20.00-22.25; ORGANIC flats 6-oz cups with lids medium-large are mostly 16.00-18.00, 12 1-pint are mostly 28.95-31.95. Quality is good. Movement from Michigan is expected to remain the same. Trading is moderate. Prices are unchanged. Flats 12/1- pt cups with lids large are mostly 20.00-22.00. The British Columbia season just started, with berries slow to mature. Current supply is less than shippers expected, falling short of current buyer demand. Harvest in British Columbia, Canada crossings supplies though Northwest Washington began the week ending of July 6, and remains very light. Additional areas are expected to begin the week of July 14. Current supplies are insufficient and in too few hands to establish a market. Quality and condition are generally good. Movement from South Georgia is expected to decrease seasonally. Remaining supplies are in too few hands to establish a market.

The following table provides a four-week price trend of the highest traded commodities this week.

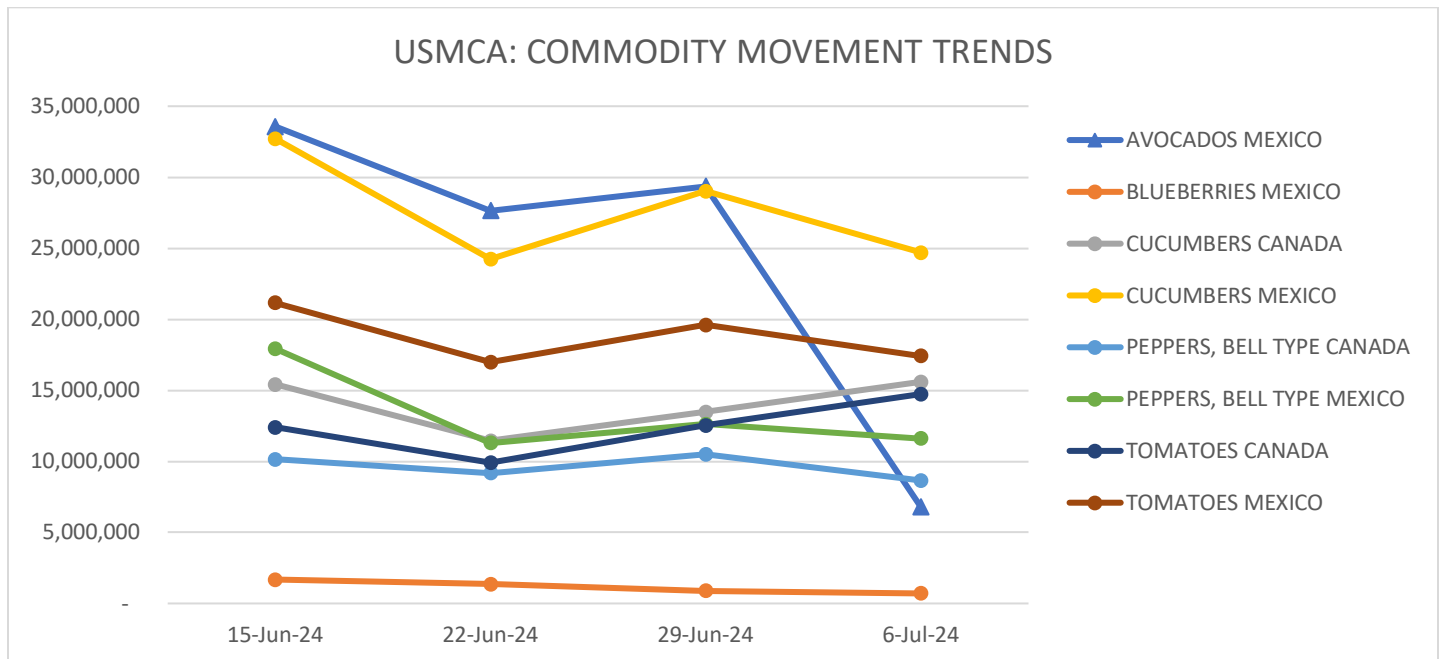
Four-Week Price Trend in U.S. Dollars

| commodity | package | 6/15/2024 | 6/22/2024 | 6/29/2024 | 7/6/2024 |
|--------------------|------------------------------|-----------|-----------|-----------|----------|
| Avocados | cartons 2 layer | \$ 51.46 | \$ 56.61 | \$ 64.04 | \$ 57.32 |
| Blueberries | flats 12 6-oz cups with lids | \$ 12.00 | \$ 11.00 | \$ 10.00 | |
| Cucumbers | 1 1/9-bushel cartons | \$ 14.47 | \$ 16.28 | \$ 16.69 | \$ 16.68 |
| Peppers, Bell Type | 11 lb cartons | \$ 14.43 | \$ 16.93 | \$ 17.79 | \$ 17.50 |
| Tomatoes | cartons 2 layer | \$ 8.73 | \$ 12.72 | \$ 17.98 | \$ 19.35 |

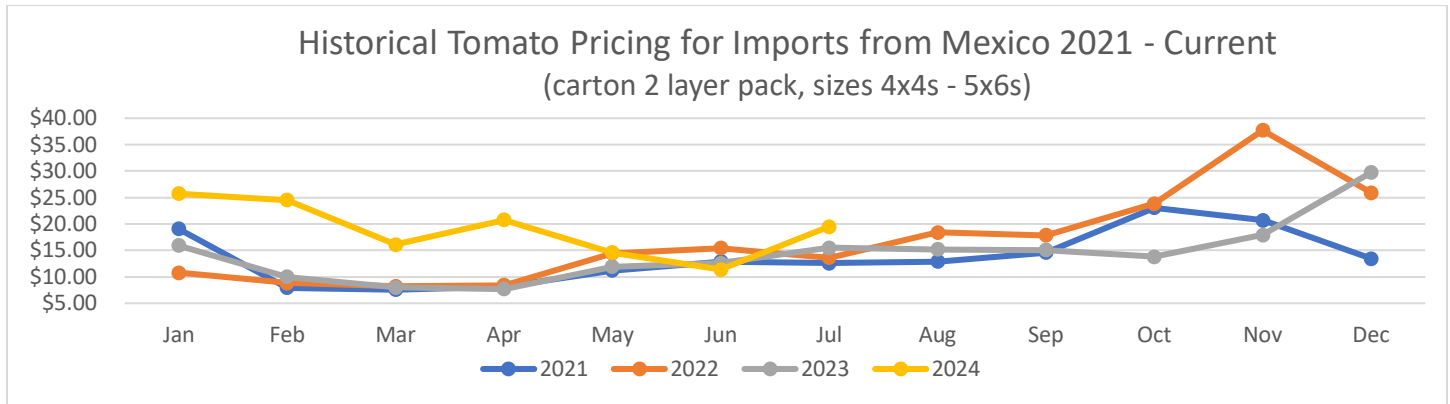


Four-Week Movement in Pounds

| COMMODITY | ORIGIN | 15-Jun-24 | 22-Jun-24 | 29-Jun-24 | 6-Jul-24 |
|--------------------|--------|------------|------------|------------|------------|
| AVOCADOS | MEXICO | 33,572,969 | 27,649,217 | 29,364,489 | 6,787,449 |
| BLUEBERRIES | MEXICO | 1,683,953 | 1,363,932 | 896,578 | 704,674 |
| CUCUMBERS | CANADA | 15,413,395 | 11,463,131 | 13,484,141 | 15,601,386 |
| | MEXICO | 32,713,800 | 24,241,637 | 29,032,579 | 24,695,759 |
| PEPPERS, BELL TYPE | CANADA | 10,152,828 | 9,186,169 | 10,499,810 | 8,656,595 |
| | MEXICO | 17,931,583 | 11,288,091 | 12,616,523 | 11,603,980 |
| TOMATOES | CANADA | 12,402,532 | 9,911,671 | 12,537,367 | 14,739,156 |
| | MEXICO | 21,152,850 | 16,989,132 | 19,596,617 | 17,432,654 |



The following chart, *Historical Tomato Pricing for Imports from Mexico*, is a four-year view of Mexican tomato prices at shipping point. Tomatoes are shown as they are the most consistently traded year-round. They have the highest volume of product moving between the U.S., Mexico, and Canada, along with a high level of market coverage of tomatoes by USDA Market News.



To be regarded as "seasonal and perishable," agricultural products must meet the following conditions: (1) the products are fresh or chilled products falling under the following HS2002 tariff codes: 0701, 0702, 0703, 0704, 0705, 0706, 0707, 0708, 0709, 0803, 0804, 0805, 0806, 0807, 0808, 0809, 0810; (2) the products are marketed in raw form for consumption without "further processing" ("further processing" refers to e.g. crushing, juicing, canning, or any other process that transforms the product from its raw form); and (3) the products normally are marketed within eight weeks after harvesting.

For information on the remaining Seasonal and Perishable commodities listed below please visit:

- Movement <https://www.marketnews.usda.gov/mnp/fv-home>
- Prices <https://mymarketnews.ams.usda.gov/>

- Potatoes
- Tomatoes
- Onions, shallots, garlic, leeks, and other alliaceus vegetables
- Cabbages, cauliflower, kohlrabi, kale, and similar edible brassicas
- Lettuce (*Lactuca sativa*) and chicory (*Cichorium* spp.)
- Carrots, turnips, salad beets (salad beetroot), salsify, celeriac, radishes, and similar edible roots
- Cucumbers, including gherkins
- Leguminous vegetables, shelled or unshelled
- Other vegetables, fresh or chilled: asparagus, eggplants, celery, mushrooms and truffles, peppers (*Capsicum* or of the genus *Pimenta*), spinach, artichokes, olives, pumpkins, squash, and gourds
- Bananas and plantains
- Dates, figs, pineapples, avocados, guavas, mangoes, and mangosteens
- Citrus fruit
- Grapes
- Melons (including watermelons) and papayas (papaws)
- Apples, pears, and quinces
- Apricots, cherries, peaches (including nectarines), plums (including prune plums) and sloes
- Other fruit: strawberries, raspberries, blackberries, mulberries, loganberries, black, white, or red currants and gooseberries (other than kiwifruit), cranberries, blueberries, and other fruits of the genus *Vaccinium*, kiwifruit, durians, persimmons,
- Other berries; tamarinds